

A & D Style

Fabric Collections From Absecon Mills & Douglass Industries

REPREVE®
IT'S WHAT'S IN IT™



Accolade Collection >>

APPLIQUE

ARBOR

CENTRUM

CRAZE

DROPLET

LAVISH

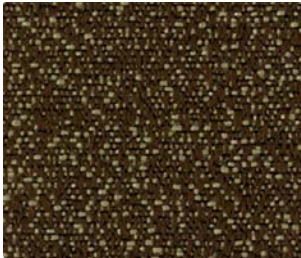
GreenPiece™ 
Eco Inspired Fabric Collections



CRAZE
Pumice



CRAZE
Caramel



CRAZE
Coastal



CRAZE
Mica



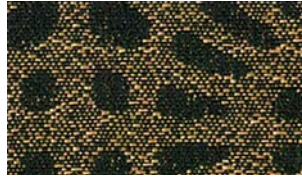
CRAZE
Bracken



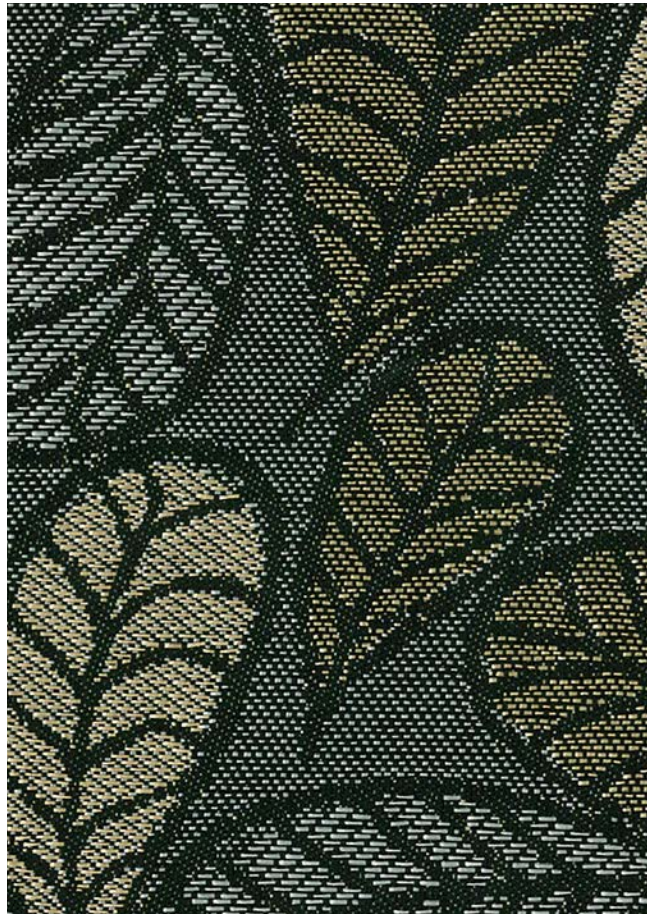
CRAZE
Black



LAVISH
Dorset Gold



ARBOR
Guinness



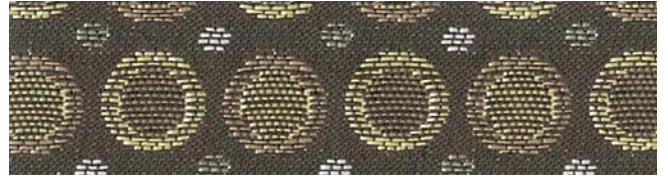
APPLIQUE
Smokehouse



ARBOR
Blacktop



ARBOR
Amber



DROPLET
Sandlot



CENTRUM
Outer Space



CENTRUM
Shale



LAVISH
Coffee Beans



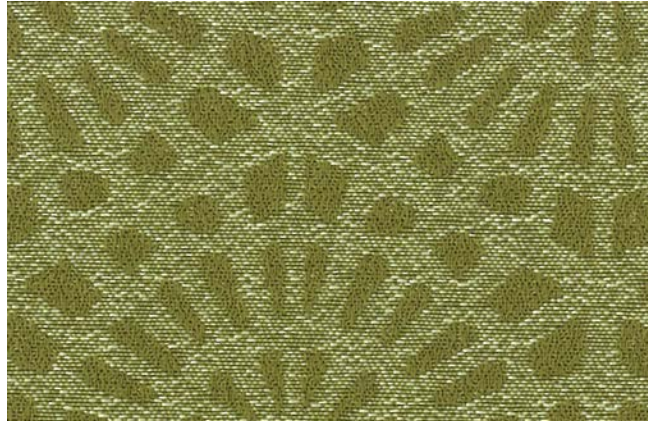
ARBOR
Haze



DROPLET
Peppercorn



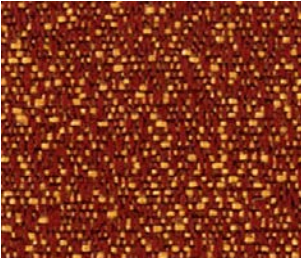
CRAZE
Citronella



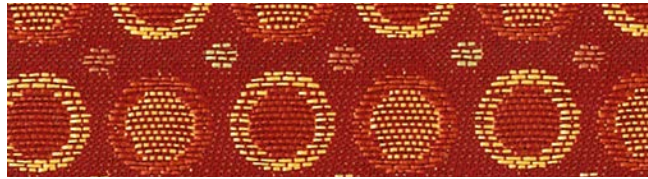
ARBOR
Shagreen



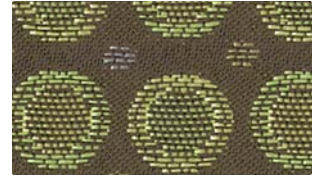
LAVISH
Catnip



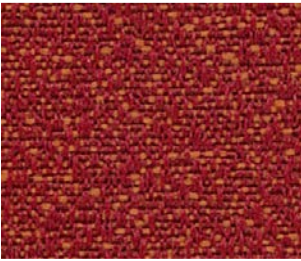
CRAZE
Saffron



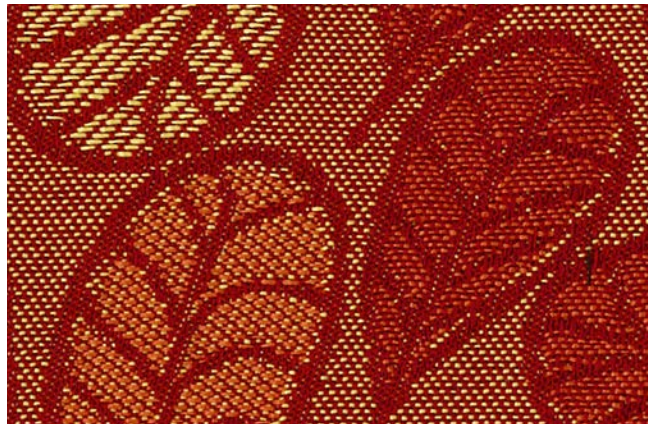
DROPLET
Cajun



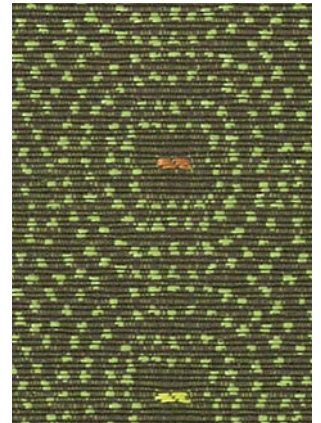
DROPLET
Sagebrush



CRAZE
Salsa



APPLIQUE
Daredevil



CENTRUM
Artichoke



CRAZE
Red Rose



LAVISH
Rambling Rose



CENTRUM
Heartfelt



CRAZE
Berry



DROPLET
Redbud



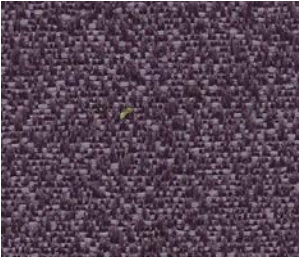
ARBOR
Kirsch



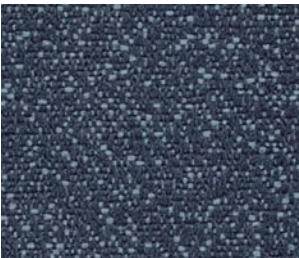
CRAZE
Burgundy



CRAZE
Palma



CRAZE
Petunia



CRAZE
Cosmic Blue



CRAZE
Riviera



CRAZE
Dark Blue



CRAZE
Regal Blue



LAVISH
Crocus



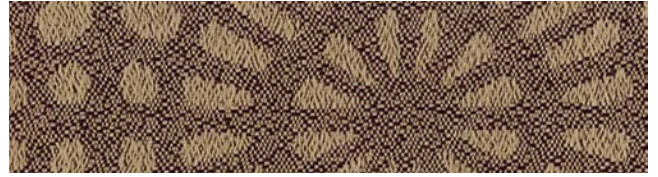
APPLIQUE
Cayman



LAVISH
Peacock



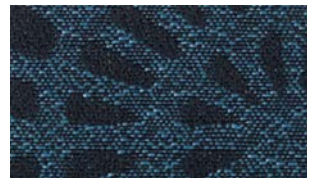
CENTRUM
Blue Chip



ARBOR
Purple Haze



DROPLET
Grape



ARBOR
Brilliant Blue



CENTRUM
Bluest Blue



DROPLET
Sport Blue



APPLIQUE
Blueprint



ARBOR
New Navy

Accolade COLLECTION

Made with Repreve® recycled polyester!

REPREVE® yarns are made from pre-consumer polyester fiber waste and post-consumer plastics, including PET water and soda bottles. The use of these yarns in our newest collection reaffirms our commitment to sustainability and to the environment.

REPREVE has undergone detailed analysis and testing by Scientific Certification Systems (SCS), a leading third-party certifier and standards developer of environmental and sustainability claims. REPREVE® has received SCS certification for the claim of 100 percent recycled content.

REPREVE is not just made from recycled content. It is also made with integrity. It took years to develop the proprietary process to make REPREVE certifiably sustainable. Since the beginning, it has been continually improving as new technology develops. This is part of Absecon's continuing commitment to be a responsible corporate entity and to eliminate any lasting environmental footprint.

REPREVE is one of the most earth-friendly fabric ingredients you'll find anywhere and we are sure you will support us in this goal to become ever greener.

POLYESTER PROCESS COMPARISON

For every 1 lb. of Repreve polyester yarn, 50,000 BTU's* are conserved, equivalent to 0.4 gallons of gasoline.

VIRGIN POLYESTER	REPREVE POLYESTER
Crude oil wellhead	Process eliminated
Crude oil refinery	Process eliminated
Naptha	Process eliminated
Xylenes	Process eliminated
Paraxylenes	Process eliminated
TA** & MEG***	TA** & MEG***
Polymerization	Repreve chip production
Extrusion	Extrusion
Texturing	Texturing

*British Thermal Units

**TA is Terephthalic Acid

***MEG is Mono Ethylene Glycol (Can be made from oil or natural gas).



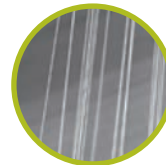
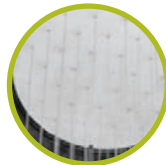
Post-industrial fiber waste and post-consumer plastics are collected.



The collected waste then enters a unique material conversion process where it's chopped, ground, melted and reformulated.



Repreve, a recycled chip, is formed.



The Repreve chip is extruded and textured through a proprietary process.



Repreve -- a family of 100% recycled fibers.



Accolade COLLECTION

10* Patterns are covered by a 10 year limited performance warranty. Contact your sales representative for written warranty terms and conditions.

TECHNICAL INFORMATION



Pattern/ Direction	Fiber	Repeat	Backing Finish	Weight (per yard)	Cleaning Code	Abrasion ASTM 4157 (Double Rubs)	Lightfastness AATCC 16E	Seam Slippage* ASTM-D-4034
Appliqué® (Up the roll)	100% Repreve® Polyester	7" H 12-7/8" V	Acrylic with Teflon®	12.5 oz.	WS	55,000 (Cotton Duck)	40 hours Class 5	Warp - 99 lbs Fill - 85 lbs
Arbor® (Up the roll)	100% Repreve® Polyester	3-1/8" H 5" V	Acrylic with Teflon®	10.3 oz.	WS	100,000 (Cotton Duck)	40 hours Class 5	Warp - 99 lbs Fill - 99 lbs
Centrum® (Up the roll)	100% Repreve® Polyester	2-3/8" H 2-1/2" V	Acrylic with Teflon®	11.0 oz.	WS	50,000 (Cotton Duck)	40 Hours Class 5	Warp - 67 lbs Fill - 95 lbs
Craze (Up the roll)	100% Repreve® Polyester	1-1/8" H 1" V	Acrylic with Teflon®	12.8 oz.	WS	80,000 (Cotton Duck)	40 Hours Class 5	Warp - 99 lbs Fill - 99 lbs
Droplet® (Up the roll)	100% Repreve® Polyester	1-1/4" H 1-3/8" V	Acrylic with Teflon®	10.7 oz.	WS	50,000 (Cotton Duck)	40 Hours Class 5	Warp - 89 lbs Fill - 99 lbs
Lavish® (Railroaded)	70% Repreve® Polyester/ 30% Polyester	2-3/16" H	Acrylic with Teflon®	11.3 oz.	WS	100,000 (Cotton Duck)	40 Hours Class 5	Warp - 83 lbs Fill - 95 lbs

Cleaning Instructions: WS - For water based stains, use mild detergent foam or upholstery shampoo. For oil based stains, spot clean with a dry cleaning solvent being sure to test area first..

Flame Resistance: California Technical Bulletin 117-2013 Section 1: Cover Fabric Test, Class 1; BIFMA X5.7-1991; UFAC, Class 1; B. S. 5852 Part 1: 1979 Ignition Source 0, smouldering cigarette.

Fabrics by Absecon Mills, Inc. Fabric performance symbols indicate that a fabric performs to commercial furniture manufacturing standards and passes all applicable testing as specified by the Association for Contract Textiles (ACT).

10/2014 | For additional cards or memo samples:

email samples@aanddstyle.com or call 1-877-356-4557



Absecon Mills is focused on being a responsible corporate entity and we are continually striving to find ways to help preserve our environment, increase energy efficiency and reduce waste. Our mode of manufacturing is specifically designed to prevent damage to the environment. Our products are woven using wind power and many are constructed with polypropylene (a by-product of gasoline manufacturing, utilizing post-industrial waste) and recycled polyester, which helps keep post-consumer waste in the material stream and out of landfills. Absecon offers finishes that use ten times less fluorocarbons than conventional finishes and are SCS Indoor Advantage Gold certified. We participate in a fabric recycling program and work hard to lessen our footprint on the environment. For more information on our green initiatives, please visit www.absecon.com



WOVEN WITH
WIND POWER

Colors may vary slightly from dye lot to dye lot.

*ASTM-D-4034: Seam 12mm from edge using 7 stitches per 25mm (1"), plain lock stitch and a 22 ballpoint needle)

