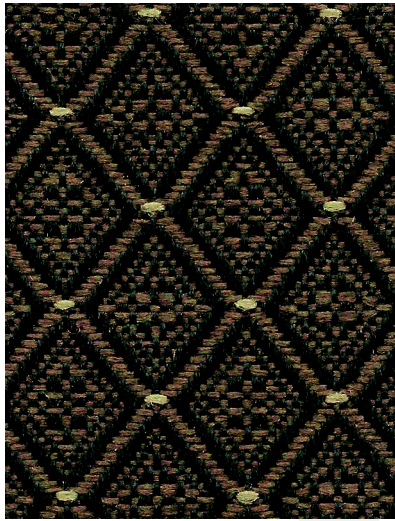
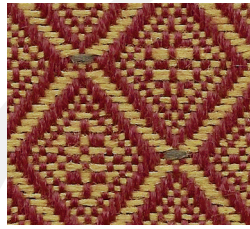


Best Value Collection

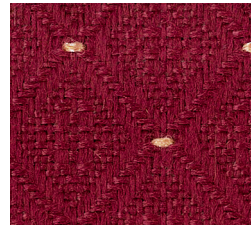
Our best colors and best patterns made with Marquésa Lana® technology.



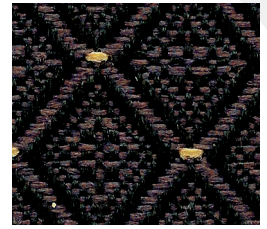
Jetta® TIMBERWOLF



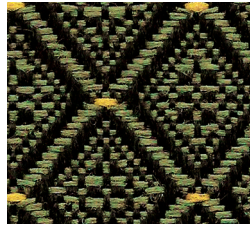
BRICK ROAD



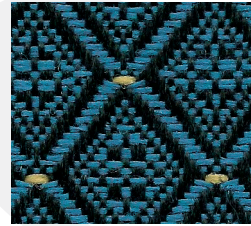
ROSEWOOD



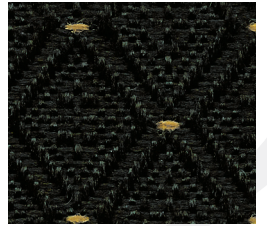
PURPLE



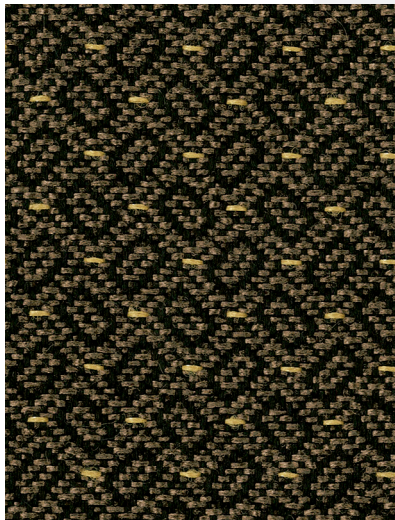
AMAZON



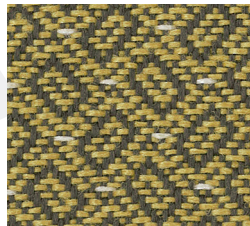
CORSAIR



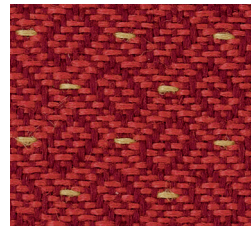
BLACK



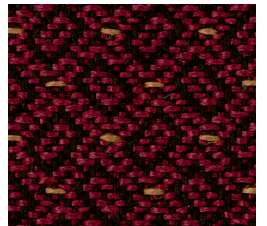
Gadget BROWN



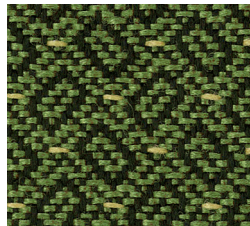
GOLD



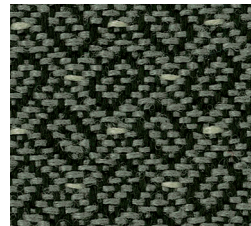
RED



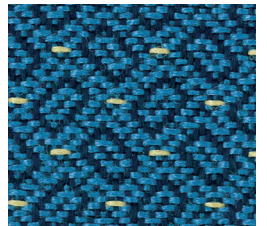
BURGUNDY



GREEN



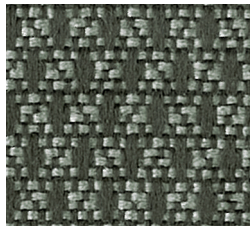
GREY



BLUE



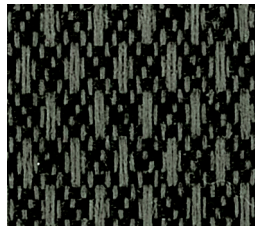
Primary LOG CABIN



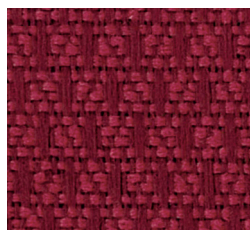
LUNA



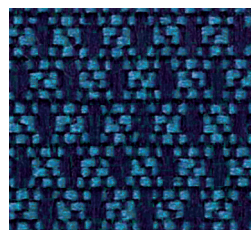
OTTER



BENGAL GREY



RIDING HOOD



REGENCY



BLACK JACK

Best Value Collection

TECHNICAL INFORMATION						A		
Pattern/Direction Width 54"	Fiber	Repeat	Backing Finish	Weight (per yard)	Cleaning Code	Abrasion ASTM 4157 (Double Rubs)	Lightfastness AATCC 16E	Seam Slippage ASTM-D-4034
Jetta (Up the roll)	100% Marquésa Lana®	5/16" H 1-3/16" V	Acrylic	11.6 oz.	WS	30,000 (Wire Screen)	60 hours Class 5	Warp - 74 lbs Fill - 94 lbs
Gadget (Up the roll)	100% Marquésa Lana®	1/2" H 1/2" V	Acrylic	11.2 oz.	WS	50,000 (Wire Screen)	60 Hours Class 5	Warp - 96 lbs Fill - 99 lbs
Primary (Up the roll)	100% Marquésa Lana®	1/4" H 1/2" V	Acrylic	13.0 oz.	WS	70,000 (Wire Screen)	60 Hours Class 5	Warp - 62 lbs Fill - 54 lbs

Cleaning Instructions: WS - For water based stains, use mild detergent foam or upholstery shampoo. For oil based stains, spot clean with a dry cleaning solvent being sure to test area first.

 Flame Resistance: California Technical Bulletin 117-2013, Section 1, NFPA 260 Cover Fabric.

Fabrics by Absecon Mills, Inc. Fabric performance symbols indicate that a fabric performs to commercial furniture manufacturing standards and passes all applicable testing as specified by the Association for Contract Textiles (ACT).

12/2015 | For additional cards or memo samples:
email samples@absecon.com or call 1-877-356-4557



Marquésa Lana® yarns are amongst the most environmentally-friendly available. It is the *only* yarn, synthetic or natural, that begins as a by-product of post-industrial waste. Compared to other synthetics, these yarns:

- Require less energy and water to produce.
- Create the least waste generation; and none of it is harmful industrial waste.
- Do not require potentially harmful topical treatments for stain resistance and other performance features.
- Have the highest calorific value, so incineration produces more usable heat energy.
- Produce smoke during incineration that is no more harmful than the smoke caused by burning wood.
- Are recyclable.



WOVEN WITH
WIND POWER

Colors may vary slightly from dye lot to dye lot.

*ASTM-D-4034: Seam 12mm from edge using 7 stitches per 25mm (1"), plain lock stitch and a 22 ballpoint needle)

Marquésa
Lana®

