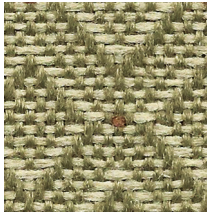


Best of the Basics

A & D Style

Fabric Collections From Absecon Mills & Douglass Industries

UPHOLSTERY FABRIC 10*



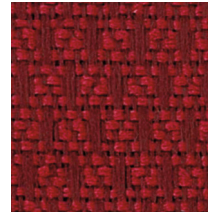
GLORY
CHAMOMILE



PRIMARY
LA MESA



GLORY
FLOWER POT



PRIMARY
RIDING HOOD



FOUNDATION
WARM RED



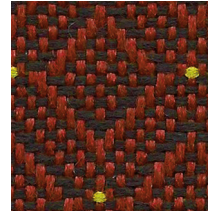
FOUNDATION
SAHARA



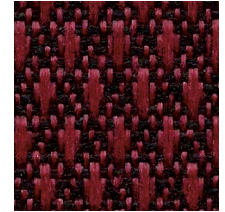
PRIMARY
BRAMBLE



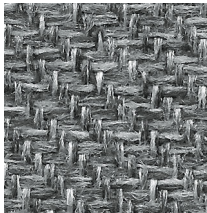
PRIMARY
MOJAVE



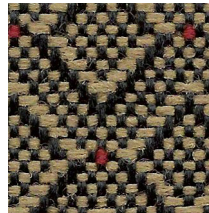
GLORY
AUBURN



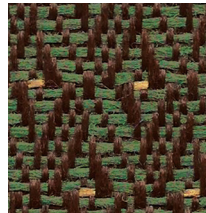
PRIMARY
CLARET



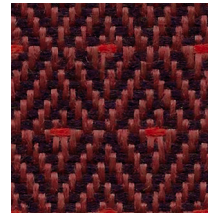
BASTILLE
MERCURY



GLORY
SHINGLE



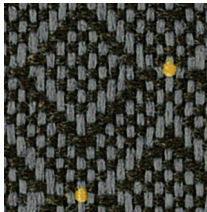
FOUNDATION
CASBAH



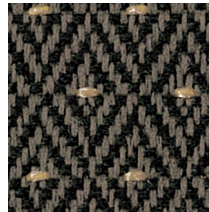
MURIOS
BLACK CHERRY



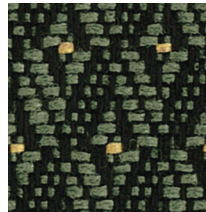
BASTILLE
PORT



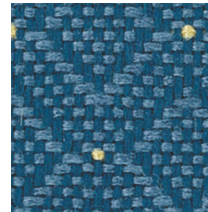
GLORY
PORPOISE



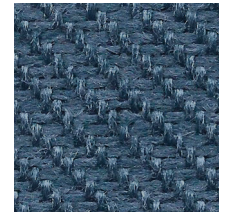
MURIOS
SHALE



FOUNDATION
EUCALYPTUS



GLORY
COSMIC BLUE



BASTILLE
RIVIERA



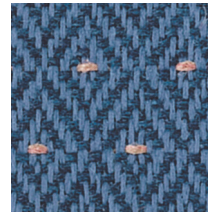
FOUNDATION
PENDULUM



PRIMARY
BENGAL GREY



PRIMARY
FOOTHILLS



MURIOS
NIGHT BLUE



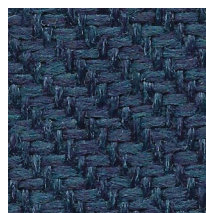
FOUNDATION
VALOR BLUE



BASTILLE
CARBON



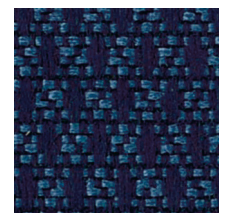
PRIMARY
PHANTOM BLUE



BASTILLE
INDIGO



GLORY
REGAL BLUE



PRIMARY
REGENCY


* Covered by a 10 year limited performance warranty.

Best of the Basics COLLECTION

10* These patterns are covered by a 10 year limited performance warranty. Contact your sales representative for written warranty terms and conditions.

TECHNICAL INFORMATION						A		
Pattern & Direction Usable Width: 54"	Fiber	Repeat	Backing Finish	Weight (per yard)	Cleaning Code	Abrasion ASTM 4157 (Double Rubs)	Lightfastness AATCC 16E	Seam Slippage ASTM-D-4034
Bastille (Up the roll)	100% Polyolefin	None	Acrylic	12.0 oz.	WS	40,000 (Wire Screen)	60 Hours Class 5	Warp - 54 lbs Fill - 40 lbs
Foundation (Up the roll)	100% Polyolefin	1/2" H 1" V	Acrylic	13.0 oz.	WS	90,000 (Wire Screen)	60 Hours Class 5	Warp - 60 lbs Fill - 43 lbs
Glory (Up the roll)	100% Polyolefin	1" H 1-1/4" V	Acrylic	14.4 oz.	WS	40,000 (Wire Screen)	60 Hours Class 5	Warp - 80 lbs Fill - 80 lbs
Murios (Up the roll)	100% Polyolefin	7/16" H 3/4" V	Acrylic	13.0 oz.	WS	50,000 (Wire Screen)	60 Hours Class 5	Warp - 80 lbs Fill - 82 lbs
Primary (Up the roll)	100% Polyolefin	1/4" H 1/2" V	Acrylic	13.0 oz.	WS	70,000 (Wire Screen)	60 Hours Class 5	Warp - 62 lbs Fill - 54 lbs

Cleaning Instructions: WS - For water based stains, use mild detergent foam or upholstery shampoo. For oil based stains, spot clean with a dry cleaning solvent, being sure to test area first.

Flame Resistance: California Technical Bulletin 117-2013: Cover Fabric Test; CS-191-53, Class 1; BIFMA X5.7-1991; UFAC, Class 1; B. S. 5852 Part 1: 1979 Ignition Source 0, smouldering cigarette. 

Fabrics by Absecon Mills, Inc. Fabric performance symbols indicate that a fabric performs to commercial furniture manufacturing standards and passes all applicable testing as specified by the Association for Contract Textiles (ACT).

01/2012

For memo samples, email samples@absecon.com



Absecon Mills is focused on being a responsible corporate entity and we are continually striving to find ways to help preserve our environment, increase energy efficiency and reduce waste. Our mode of manufacturing is specifically designed to prevent damage to the environment. Our products are woven using wind power and many are constructed with polypropylene (a by-product of gasoline manufacturing, utilizing post-industrial waste) and recycled polyester, which helps keep post-consumer waste in the material stream and out of landfills. Absecon offers finishes that use ten times less fluorocarbons than conventional finishes and are SCS Indoor Advantage Gold certified. We participate in a fabric recycling program and work hard to lessen our footprint on the environment. For more information on our green initiatives, please visit www.absecon.com.



WOVEN WITH
WIND POWER

Colors may vary slightly from dye lot to dye lot.

*ASTM-D-4034: Seam 12mm from edge using 7 stitches per 25mm (1"), plain lock stitch and a 22 ballpoint needle)

