

WARP SPEED® >>

IN STOCK
for quick delivery!

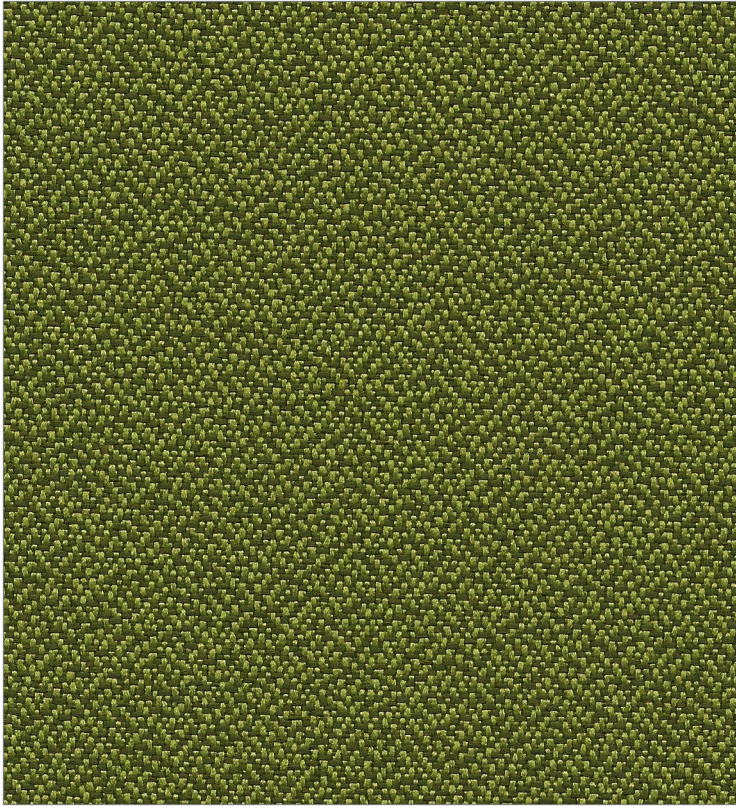
A & D Style

Fabric Collections From Absecon Mills & Douglass Industries

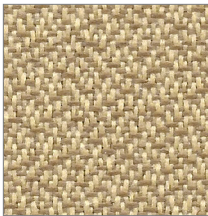
Del Mar • Icon

UPHOLSTERY FABRIC 10*

100% Recycled Polyester



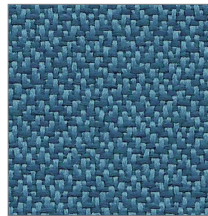
DEL MAR
OASIS



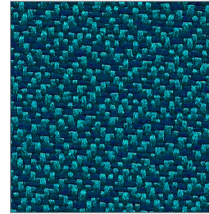
DEL MAR
MAPLE SUGAR



ICON
SESAME



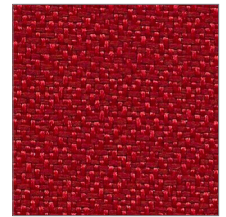
DEL MAR
BLUE MOON



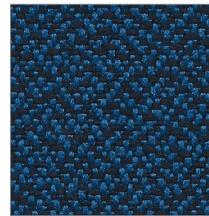
DEL MAR
BLUE CORAL



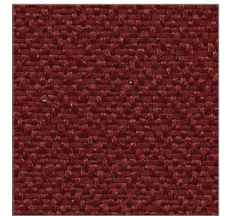
ICON
BLUE



DEL MAR
MARS RED



DEL MAR
MIDNIGHT



ICON
CRANBERRY



ICON
TAUPE



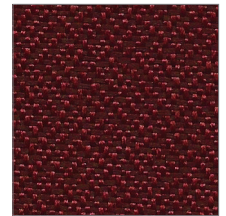
DEL MAR
NUTMEG



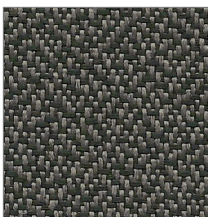
ICON
GREY



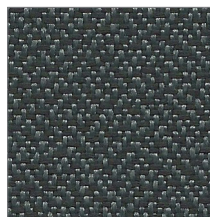
ICON
NAVY



DEL MAR
RUBY WINE



DEL MAR
ASH



DEL MAR
STEEL GREY



ICON
VINEYARD



ICON
BLACK



ICON
BURGUNDY

* Covered by a 10 year limited performance warranty.

Del Mar • Icon UPHOLSTERY FABRIC

10* Pattern is covered by a 10 year limited performance warranty. Contact your sales representative for written warranty terms and conditions.

TECHNICAL INFORMATION

Fiber: 100% Recycled Polyester

Backing | Finish: Acrylic with Teflon®

A Abrasion Resistance: 400,000 double rubs (cotton duck)

Weight: 11.5 ounces per linear yard (355 g/m)

Width: 54" (137-140 cm)

Repeat: None

*** Lightfastness:** 60 Hours, Class 5

☘ Colorfastness: Wet - Class 5 | Dry - Class 5

☆ Seam Slippage: Warp - 87 lbs | Fill - 87 lbs.

Cleaning Instructions: WS - For water based stains, use mild detergent foam or upholstery shampoo. For oil based stains, spot clean with a dry cleaning solvent being sure to test area first.

🔥 Flame Resistance: California Technical Bulletin 117-2013 Section 1: Cover Fabric Test; CS-191-53, Class 1; BIFMA X5.7-1991; UFAC, Class 1; B. S. 5852 Part 1: 1979 Ignition Source 0, smoldering cigarette.

Fabrics by Absecon Mills, Inc. Fabric performance symbols indicate that a fabric performs to commercial furniture manufacturing standards and passes all applicable testing as specified by the Association for Contract Textiles (ACT).

10/2012 | For additional cards or memo samples:

email samples@aanddstyle.com

or call **1-877-356-4557**



Absecon Mills is focused on being a responsible corporate entity and we are continually striving to find ways to help preserve our environment, increase energy efficiency and reduce waste. Our mode of manufacturing is specifically designed to prevent damage to the environment. Our products are woven using wind power and many are constructed with polypropylene (a by-product of gasoline manufacturing, utilizing post-industrial waste) and recycled polyester, which helps keep post-consumer waste in the material stream and out of landfills. Absecon offers finishes that use ten times less fluorocarbons than conventional finishes and are SCS Indoor Advantage

Gold certified. We participate in a fabric recycling program and work hard to lessen our footprint on the environment. For more information on our green initiatives, please visit www.absecon.com

Colors may vary slightly from dye lot to dye lot.

*ASTM-D-3597-02: Seam 12mm from edge using 7 stitches per 25mm (1"), plain lock stitch and a 22 ballpoint needle)

