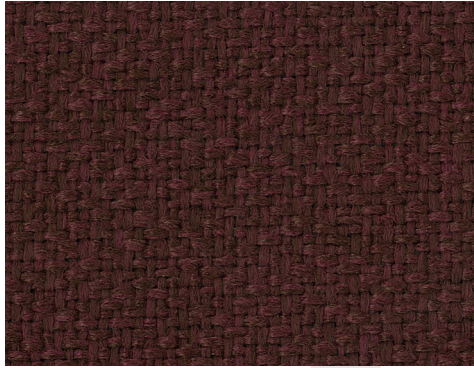


Divinity III Collection

UPHOLSTERY FABRIC

5*



Crista PORT



HONEY



TEAL



LAPIS



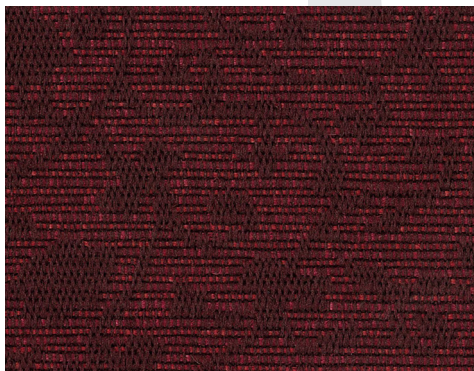
RUBY



RASPBERRY



INDIGO



Elegance AMERICAN BEAUTY



DEEP OCHRE



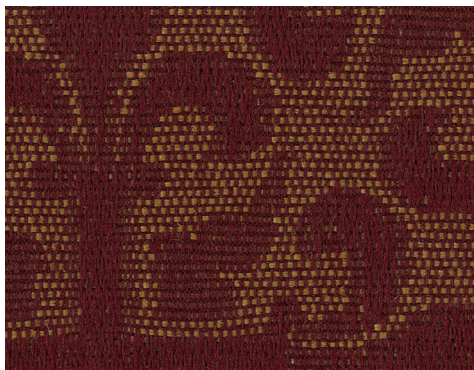
PETUNIA



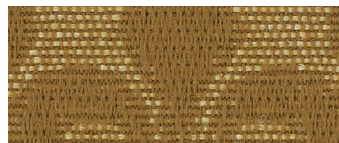
FIR GREEN



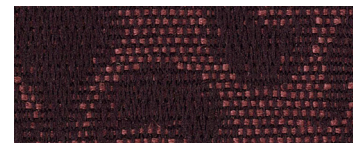
BLUE



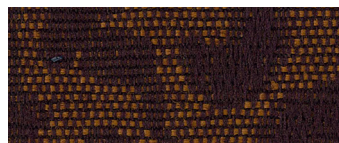
Estate RUSTIC RED



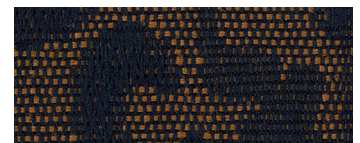
BUTTER



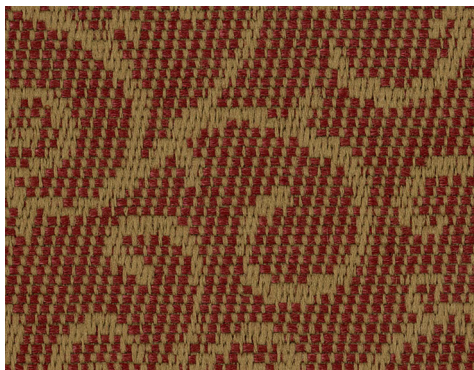
RED PURPLE



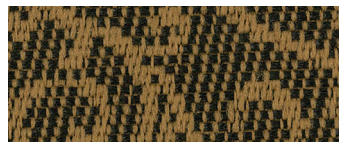
MIXED PURPLE



WEST WIND



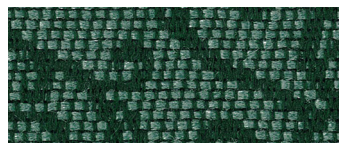
Delano AURORA RED



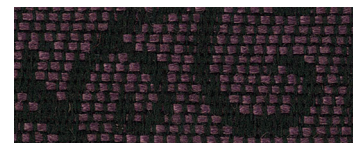
TARNISH



INDIGO



TEAL



EGGPLANT

* Covered by a 5 year limited performance warranty.

Divinity III COLLECTION

5* These patterns are covered by a 10 year limited performance warranty. Contact your sales representative for written warranty terms and conditions.

TECHNICAL INFORMATION						A		
Pattern & Direction Usable Width: 54"	Fiber	Repeat	Backing Finish	Weight (per yard)	Cleaning Code	Abrasion ASTM 4157 (Double Rubs)	Lightfastness AATCC 16E	Seam Slippage ASTM-D-4034
Crista (Up the roll)	100% Polyolefin	None	Acrylic	11.0 oz.	WS	50,000 (Wire Screen)	60 Hours Class 5	Warp - 53 lbs Fill - 42 lbs
Delano (Up the roll)	57% Polyester 43% Polyolefin	3-7/16" H 3-1/8" V	Acrylic	14.0 oz.	WS	30,000 (Wire Screen)	60 Hours Class 5	Warp - 35 lbs Fill - 45 lbs
Elegance (Up the roll)	60% Polyester 40% Polyolefin	9-3/8" H 8-3/8" V	Acrylic	13.0 oz.	WS	75,000 (Wire Screen)	40 Hours Class 4-5	Warp - 90 lbs Fill - 54 lbs
Estate (Up the roll)	70% Polyester 30% Polyolefin	4-3/4" H 4-3/4" V	Acrylic	10.5 oz.	WS	30,000 (Wire Screen)	40 Hours Class 4-5	Warp - 86 lbs Fill - 102 lbs

Cleaning Instructions: WS - Use a water based cleaner. Spot clean fabric with water based cleaning agents such as a mild detergent foam or commercial upholstery shampoo. Use sparingly and avoid overwetting.

Flame Resistance: California Technical Bulletin 117, Section E; CS-191-53, Class 1; BIFMA X5.7-1991; UFAC, Class 1; B. S. 5852 Part 1: 1979 Ignition Source 0, smouldering cigarette. 

Fabrics by Absecon Mills, Inc. Fabric performance symbols indicate that a fabric performs to commercial furniture manufacturing standards and passes all applicable testing as specified by the Association for Contract Textiles (ACT).

04/2009 | For additional cards or memo samples:

email samples@absecon.com or call 1-877-356-4557



Absecon Mills is focused on being a responsible corporate entity and we are continually striving to find ways to help preserve our environment, increase energy efficiency and reduce waste. Our mode of manufacturing is specifically designed to prevent damage to the environment. Our products are woven using wind power and many are constructed with polypropylene (a by-product of gasoline manufacturing, utilizing post-industrial waste) and recycled polyester, which helps keep post-consumer waste in the material stream and out of landfills. Absecon offers finishes that use ten times less fluorocarbons than conventional finishes and are SCS Indoor Advantage Gold certified. We participate in a fabric recycling program and work hard to lessen our footprint on the environment. For more information on our green initiatives, please visit www.absecon.com.

