

A & D Style

Fabric Collections From Absecon Mills & Douglass Industries

GreenPiece™ 
Eco Inspired Fabric Collections



Earthly Treasures >>

ESCAPADE

FLING

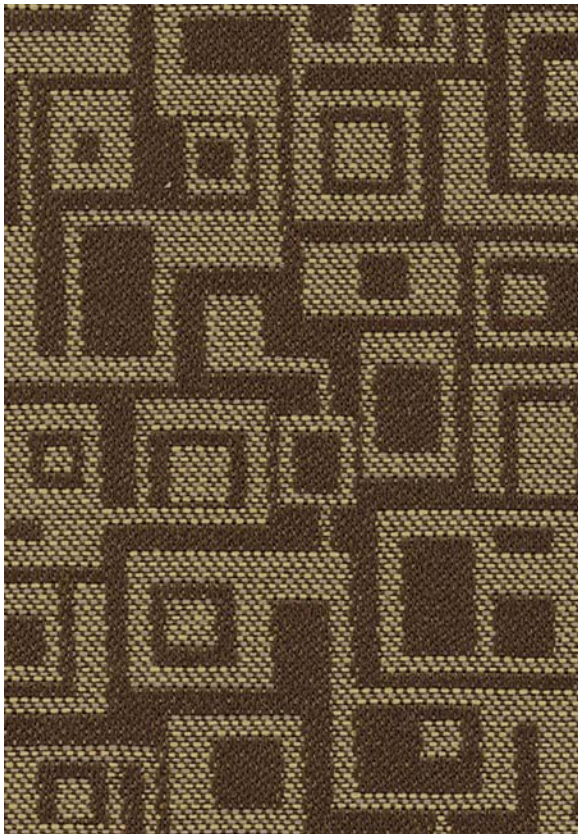
FROLIC

RHUMBA

RUNWAY

SHINDIG

>> *Previously introduced as Cantara II*



Rhumba[®] DRIFTWOOD



GOLD BULLION



RED ROVER



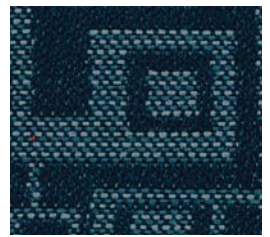
TERRAPIN



TEXAS TEA



SLATE



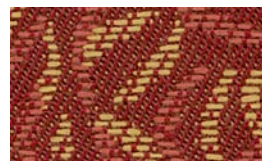
INK BLUE



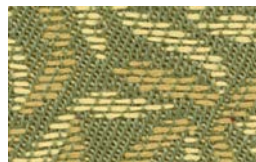
Shindig[®] SLATE



SPUN GOLD



GRENADINE



SWEET PEA



BLUE BRIAR



ZINC



PACIFIC BLUE



WINTER GARDEN



SADDLE



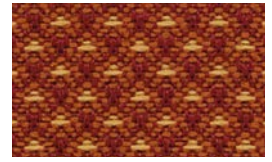
RATTAN



SAWGRASS



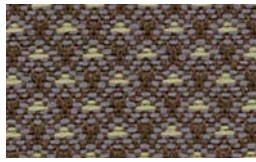
OASIS



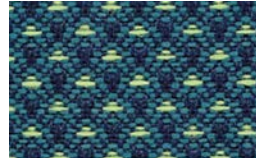
TABASCO



TAUPE



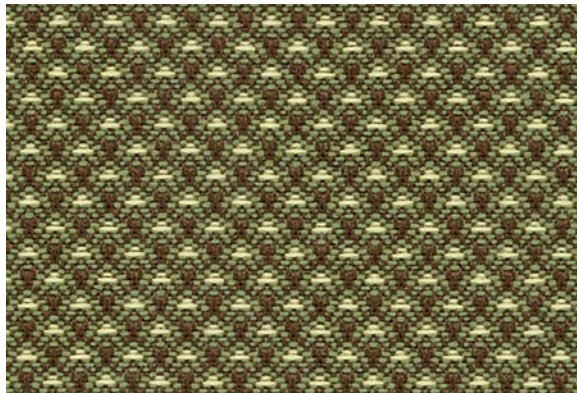
HEATHER



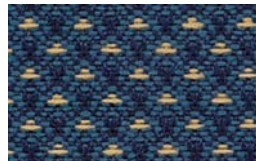
PEACOCK



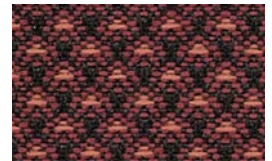
GARNET



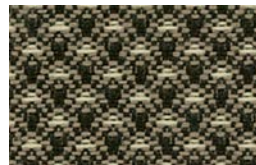
Fling MOSS



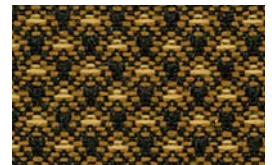
BLUE



DARK RED



SHALE



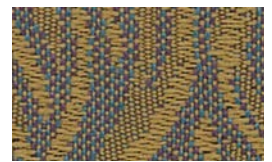
TRAILWAY



Frolic[®] BRONZE GREEN



SUNLIGHT



THISTLE



ICED MOCHA



BLUE



MINERAL GREY



CRIMSON



CHIPMUNK



ANTIQUED RED



Runway COWBOY BLUE



BAHAMA BLUE



RHEINGOLD



RETRO



RED



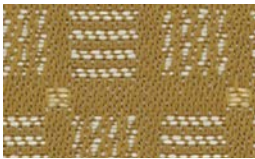
GREENFIELD



AMERICANA



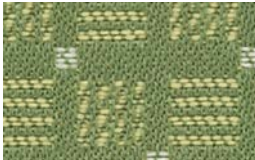
Escapade BLUEBELL



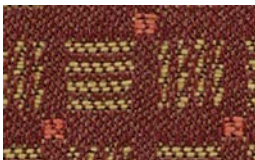
BEACH SAND



AURORA RED



PERIDOT



BARN DOOR



WINTER MOSS



COCOA



CHARCOAL



MAHOGANY

Earthly Treasures COLLECTION

»» Made with Repreve® recycled polyester!

Our very successful Cantara program has been re-engineered using eco-friendly REPREEVE® recycled polyester yarn. REPREEVE® yarns are made from pre-consumer polyester fiber waste and post-consumer plastics, including PET water and soda bottles. The use of these yarns in our newest collection reaffirms our commitment to sustainability and to the environment.

REPREEVE has undergone detailed analysis and testing by Scientific Certification Systems (SCS), a leading third-party certifier and standards developer of environmental and sustainability claims. REPREEVE® has received SCS certification for the claim of 100 percent recycled content.

The specifications of our Earthly Treasures patterns (previously known as Cantara II) are actually improved with this new yarn, meaning better durability (increased double rubs) with no compromise in design or construction. This is part of Absecon's continuing commitment to be a responsible corporate entity and to eliminate any lasting environmental footprint.

We are sure you will support us in this goal to become ever greener, and we thank you for your understanding and cooperation.



Earthly Treasures COLLECTION

5* Pattern is covered by a 5 year limited performance warranty. Contact your sales representative for written warranty terms and conditions.

TECHNICAL INFORMATION						A		
Pattern/ Direction	Fiber	Repeat	Backing	Weight (per yard)	Cleaning Code	Abrasion ASTM 4197 (Double Rubs)	Lightfastness AATCC 16E	Seam Slippage ASTM-D-4034
Escapade (Up the roll)	100% Polyester	7/8" H 1-1/8" V	Acrylic	15.0 oz. (464 g/m).	WS	75,000 (Cotton Duck)	40 Hours Class 5	Warp - 99 lbs Fill - 99 lbs
Fling (Up the roll)	100% Polyester	1/4" H 1/4" V	Acrylic	16.0 oz. (494 g/m)	WS	75,000 (Cotton Duck)	40 Hours Class 4.5	Warp - 99 lbs Fill - 89 lbs
Frolic (Railroaded)	100% Polyester	2" H 2-3/4" V	Acrylic	14.0 oz. (433 g/m)	WS	70,000 (Cotton Duck)	40 Hours Class 5	Warp - 99 lbs Fill - 99 lbs
Rhumba (Up the roll)	100% Polyester	7" H 13-1/8" V	Acrylic	13.5 oz. (417 g/m)	WS	100,000 (Cotton Duck)	40 Hours Class 5	Warp - 99 lbs Fill - 99 lbs
Runway (Railroaded)	100% Polyester	2-7/8" H	Acrylic	13.9 oz. (430 g/m)	WS	100,000 (Cotton Duck)	40 Hours Class 5	Warp - 99 lbs Fill - 99 lbs
Shindig (Up the roll)	100% Polyester	4-1/2" H 5-1/16" V	Acrylic	14.5 oz. (448 g/m)	WS	100,000 (Cotton Duck)	40 Hours Class 5	Warp - 99 lbs Fill - 99 lbs

Cleaning Instructions: WS - For water based stains, use mild detergent foam or upholstery shampoo. For oil based stains, spot clean with a dry cleaning solvent being sure to test area first.

Flame Resistance: California Technical Bulletin 117-2013: Cover Fabric Test; CS-191-53, Class 1; BIFMA X5.7-1991; UFAC, Class 1; B. S. 5852 Part 1: 1979 Ignition Source 0, smoldering cigarette. 

Fabrics by Absecon Mills, Inc. Fabric performance symbols indicate that a fabric performs to commercial furniture manufacturing standards and passes all applicable testing as specified by the Association for Contract Textiles (ACT).

5/2010 | For additional cards or memo samples:

email samples@andstyle.com or call 1-877-356-4557



ACADEMIC



CORPORATE



HEALTHCARE



HOSPITALITY



THEATER



Absecon Mills is focused on being a responsible corporate entity and we are continually striving to find ways to help preserve our environment, increase energy efficiency and reduce waste. Our mode of manufacturing is specifically designed to prevent damage to the environment. Our products are woven using wind power and many are constructed with polypropylene (a by-product of gasoline manufacturing, utilizing post-industrial waste) and recycled polyester, which helps keep post-consumer waste in the material stream and out of landfills. Absecon offers finishes that use ten times less fluorocarbons than conventional finishes and are SCS Indoor Advantage Gold certified. We participate in a fabric recycling program and work hard to lessen our footprint on the environment. For more information on our green initiatives, please visit www.absecon.com



WOVEN WITH
WIND POWER

Colors may vary slightly from dye lot to dye lot.

*ASTM-D-4034: Seam 12mm from edge using 7 stitches per 25mm (1"), plain lock stitch and a 22 ballpoint needle)

