

Mission[®]

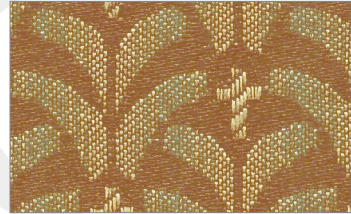
UPHOLSTERY FABRIC

100% Polyester

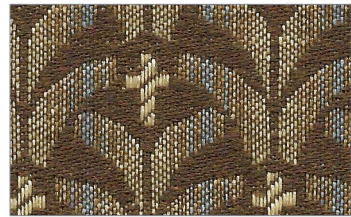
5*



BURGUNDY



MESA VERDE



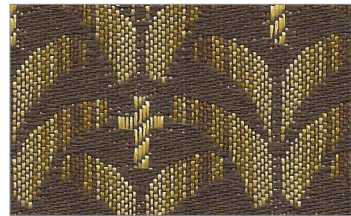
SLATE



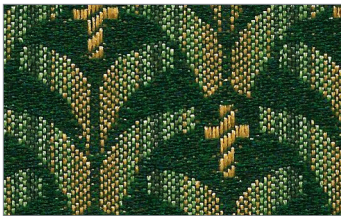
SAGE



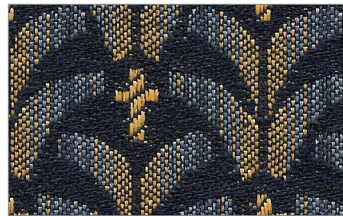
PRAIRIE



DUNE



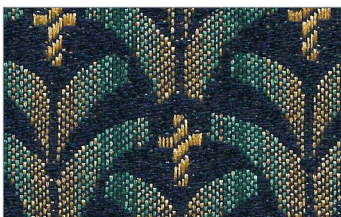
SUMMER



BLUE



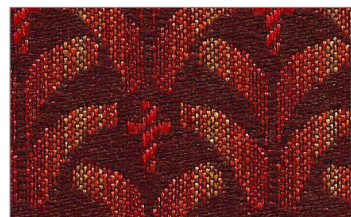
BLACK GOLD



NAUTICA



REGAL



CARDINAL

* Covered by a 5 year limited performance warranty.

TECHNICAL INFORMATION

Fiber: 100% Polyester

Backing | Finish: Acrylic with Teflon[®]

A Abrasion Resistance: 60,000 double rubs (cotton duck)

Weight: 10.0 ounces per linear yard (309 g/m)

Width: 54" (137-140 cm)

Repeat: 1-3/8"H x 1-1/4"V (Pattern is woven railroaded)

☼ Lightfastness: 40 Hours, Class 5

☯ Colorfastness: Wet - Class 4.5 | Dry - Class 4.5

★ Seam Slippage: Warp - 92 lbs | Fill - 100 lbs.

Cleaning Instructions: WS - For water based stains, use mild detergent foam or upholstery shampoo. For oil based stains, spot clean with a dry cleaning solvent being sure to test area first.

🔥 Flame Resistance: California Technical Bulletin 117-2013; NFPA 260

Fabrics by Absecon Mills, Inc. Fabric performance symbols indicate that a fabric performs to commercial furniture manufacturing standards and passes all applicable testing as specified by the Association for Contract Textiles (ACT).

06/2013 | For additional cards or memo samples:

email samples@absecon.com or call 1-877-356-4557



Absecon Mills is focused on being a responsible corporate entity and we are continually striving to find ways to help preserve our environment, increase energy efficiency and reduce waste. Our mode of manufacturing is specifically designed to prevent damage to the environment. Our products are woven using wind power and many are constructed with polypropylene (a by-product of gasoline manufacturing, utilizing post-industrial waste) and recycled polyester, which helps keep post-consumer waste in the material stream and out of landfills. Absecon offers finishes that use ten times less fluorocarbons than conventional finishes and are SCS Indoor Advantage Gold certified. We participate in a fabric recycling program and work hard to lessen our footprint on the environment. For more information on our green initiatives, please visit www.absecon.com



WOVEN WITH WIND POWER

Colors may vary slightly from dye lot to dye lot.

*ASTM-D-4034: Seam 12mm from edge using 7 stitches per 25mm (1"), plain lock stitch and a 22 ballpoint needle)

