



Fashionable and cultured, a handsome collection colored for modern lifestyles.



Modern Gentry Collection >>

BRONSON

DARCY

FARLEY

HAMILTON

KINGSLEY

PRESCOTT



HAMILTON
Scone



BRONSON
Buff



PRESCOTT
Birch



KINGSLEY
Sesame



HAMILTON
Stonewall



PRESCOTT
Flint



FARLEY
Newport



DARCY
Armadillo



BRONSON
Slate



PRESCOTT
Mink



BRONSON
Putty



KINGSLEY
Caviar



FARLEY
Onyx



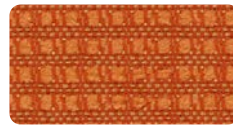
PRESCOTT
Platinum



BRONSON
Graphite



DARCY
Soufflé



BRONSON
Starfish



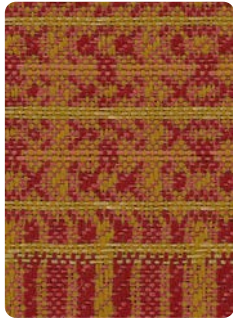
PRESCOTT
Mimosa



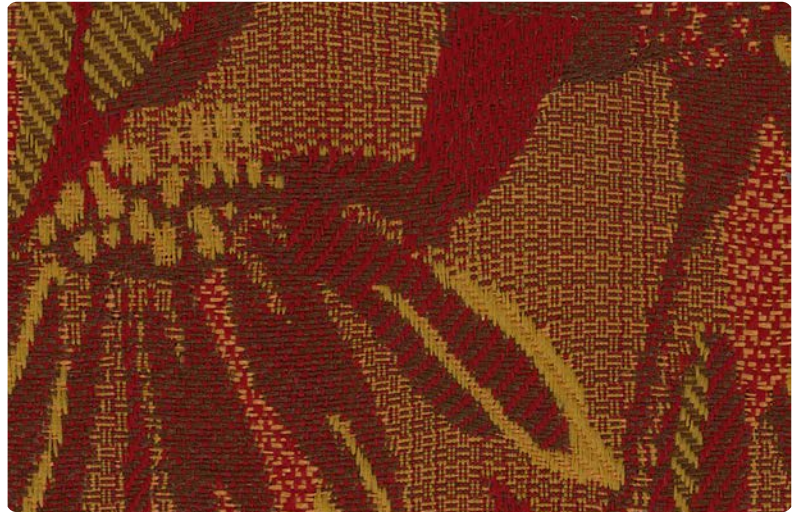
HAMILTON
Amber



BRONSON
Yukon



KINGLSEY
Heritage



FARLEY
Crimson



DARCY
Russet



PRESCOTT
Allspice



KINGLSEY
Cordial



HAMILTON
Brique



BRONSON
Grenadine



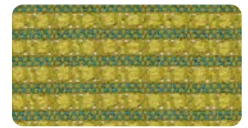
BRONSON
Bordeaux



FARLEY
Meadow



PRESCOTT
Celery



BRONSON
Envy



DARCY
Pistachio



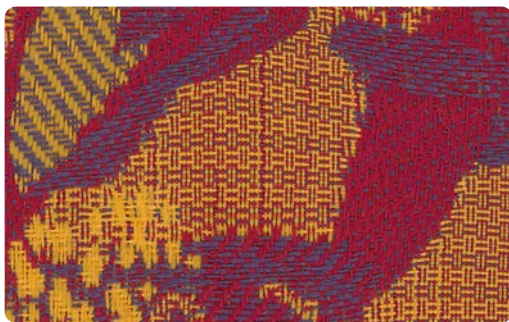
KINGSLEY
Peridot



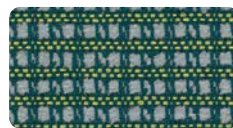
DARCY
Parasail



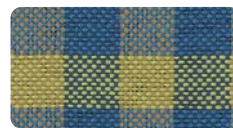
KINGSLEY
Imperial



FARLEY
Aloha



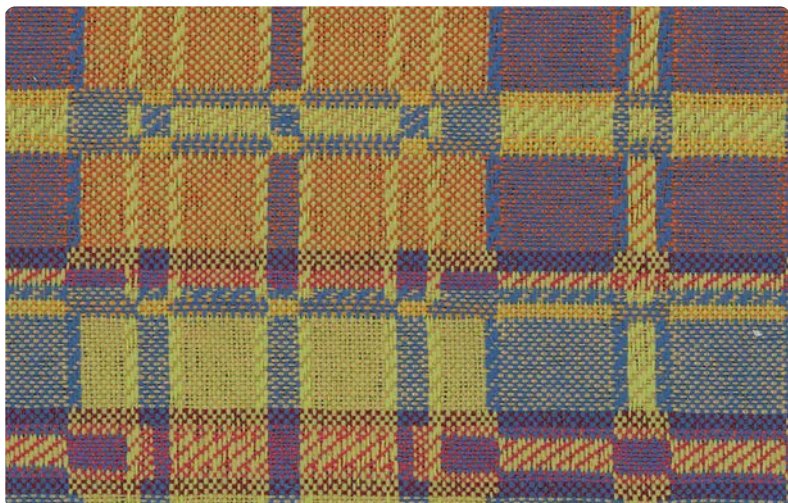
BRONSON
Calypso



PRESCOTT
Grotto



BRONSON
Denim



DARCY
Festival



HAMILTON
Oasis



PRESCOTT
Taffy



BRONSON
Admiral

Traditional Patterns Energized with Modern Colors

The MODERN GENTRY collection is reminiscent of historic and stately manors and their beautifully landscaped gardens in the English countryside. The patterns are based in tradition, but our color palette is bright, fresh, modern and unstuffy.

Cultured Sensibility

Fashionable Colors

Tailored Patterns

Handsome and Neat

Timeless Elegance

Stately Presence

Refined Style

Modern Flair

ANY fabric ➤➤ **ANY finish**

At Absecon, we offer you the flexibility to choose any finish/backing for your fabric. Our 100% polyester fabrics come standard with acrylic backing and stain resistant finish, but you have the ability to choose a finish option that is right for your project. We proudly weave and finish your fabric to your exact specifications. You can visit our website, www.absecon.com/performance to learn more about our available performance finishes and backings.

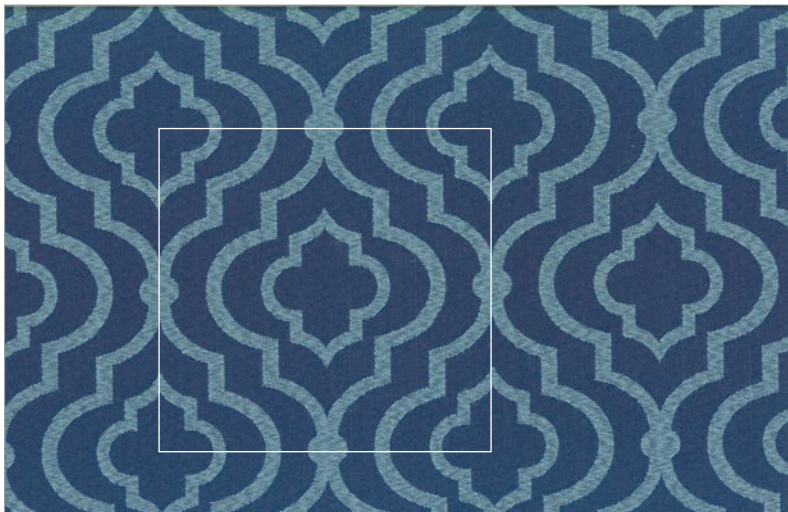
Absecon Mills is a family business with a rich tradition in textiles and is proud to make our products in America and continue to be a leader in beautifully designed high quality textiles.



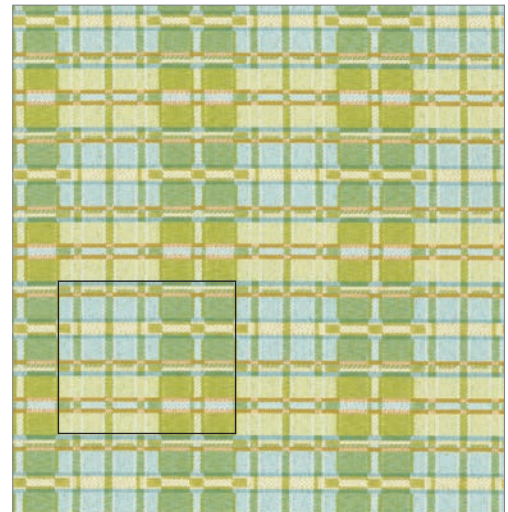
Kingsley: 2-13/16" H x 2-15/16 V"



Farley: 9" H x 7-3/8 V"



Hamilton: 7" H x 7" V



Darcy: 3-1/2" H x 3-1/4" V

Modern Gentry COLLECTION

5* Patterns are covered by a 5 year limited performance warranty. Contact your sales representative for written warranty terms and conditions.

TECHNICAL INFORMATION

Pattern/Direction Width: 54"	Fiber	Repeat	Backing Finish <small>(Please inquire about other available finishes to suit your specific needs)</small>	Weight (per yard)	Cleaning Code	Abrasion ASTM 4157 (Double Rubs)	Lightfastness AATCC 16E	Seam Slippage* ASTM-D-4034
Bronson (Up the roll)	100% Polyester	1/4" H 3/16" V	Acrylic with Stain Repellent	14.5 oz.	WS	115,000 (Cotton Duck)	40 hours Class 5	Warp - 86 lbs Fill - 80 lbs
Darcy® (Up the roll)	100% Polyester	3-1/2" H 3-1/4" V	Acrylic with Stain Repellent	14.7 oz.	WS	50,000 (Cotton Duck)	40 hours Class 5	Warp - 72 lbs Fill - 70 lbs
Farley® (Up the roll)	100% Polyester	9" H 7-3/8" V	Acrylic with Stain Repellent	13.3 oz.	WS	60,000 (Cotton Duck)	40 Hours Class 5	Warp - 66 lbs Fill - 64 lbs
Hamilton® (Up the roll)	100% Polyester	7" H 7" V	Acrylic with Stain Repellent	10.5 oz.	WS	50,000 (Cotton Duck)	40 Hours Class 5	Warp - 64 lbs Fill - 75 lbs
Kinglsey® (Up the roll)	100% Polyester	2-13/16" H 2-15/16" V	Acrylic with Stain Repellent	14.1 oz.	WS	50,000 (Cotton Duck)	40 Hours Class 5	Warp - 51 lbs Fill - 56 lbs
Prescott (Up the roll)	100% Polyester	9/16" H 9/16" V	Acrylic with Stain Repellent	14.9 oz.	WS	65,000 (Cotton Duck)	40 Hours Class 5	Warp - 75 lbs Fill - 61 lbs

Cleaning Instructions: WS - For water based stains, use mild detergent foam or upholstery shampoo. For oil based stains, spot clean with a dry cleaning solvent being sure to test area first.

Flame Resistance: California Technical Bulletin 117-2013; NFPA 260

These patterns do not contain fire retardant additives.

abSECON

Fabrics by Absecon Mills, Inc.
www.absecon.com

11/2020 | For additional cards or memo samples:
email samples@absecon.com or call 1-877-356-4557



Absecon Mills is focused on being a responsible corporate entity and we are continually striving to find ways to help preserve our environment, increase energy efficiency and reduce waste. Our mode of manufacturing is specifically designed to prevent damage to the environment. Our products are woven using wind power and many are constructed with polypropylene (a by-product of gasoline manufacturing, utilizing post-industrial waste) and recycled polyester, which helps keep post-consumer waste in the material stream and out of landfills. Absecon offers finishes that use ten times less fluorocarbons than conventional finishes and are SCS Indoor Advantage Gold certified. We participate in a fabric recycling program and work hard to lessen our footprint on the environment. For more information on our green initiatives, please visit www.absecon.com



WOVEN WITH
WIND POWER

Colors may vary slightly from dye lot to dye lot.

*ASTM-D-4034: Seam 12mm from edge using 7 stitches per 25mm (1"), plain lock stitch and a 22 ballpoint needle)

