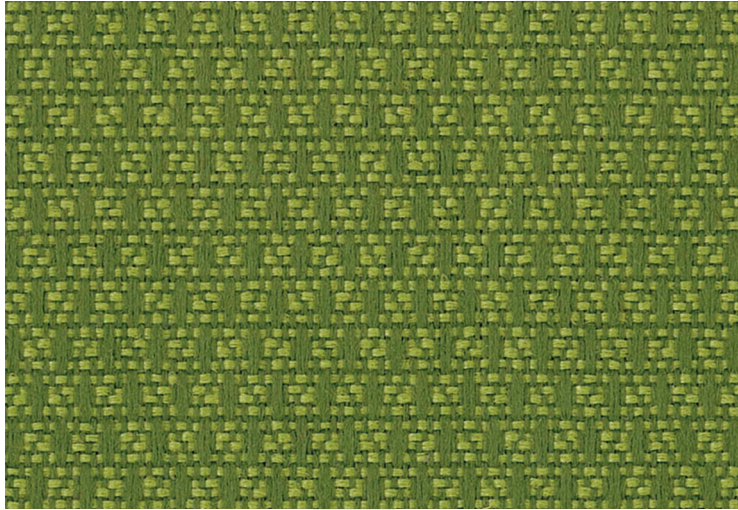


Primary

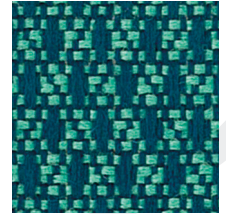
UPHOLSTERY FABRIC 10*
100% Polyolefin



GREEN GIANT



LUNA



KEY LARGO



CURRY



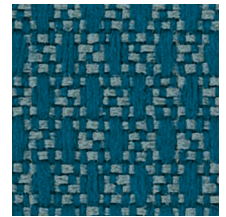
LA MESA



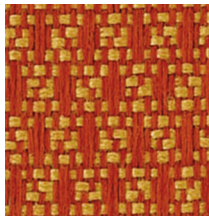
JASPER



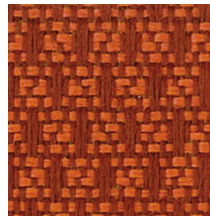
MOJAVE



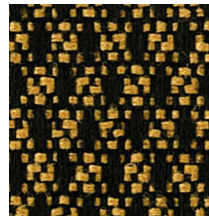
DENIM



CARROT



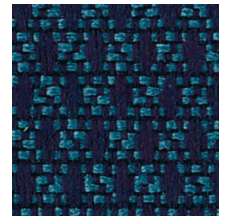
PAPRIKA



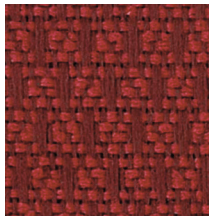
BRASS TACKS



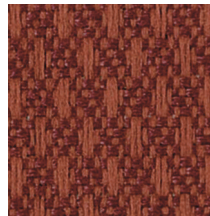
OTTER



REGENCY



RIDING HOOD



ROSE BOWL



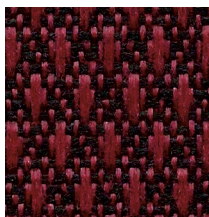
LOG CABIN



BRAMBLE



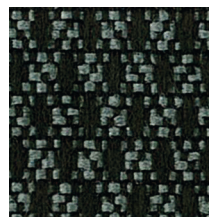
MIDNIGHT



CLARET



BENGAL GREY



ECLIPSE



FOOT HILLS



BLACK JACK

* Covered by a 10 year limited performance warranty.

Primary[®] UPHOLSTERY FABRIC

10* Pattern is covered by a 10 year limited performance warranty. Contact your sales representative for written warranty terms and conditions.

TECHNICAL INFORMATION

Fiber: 100% Marquésa Lana™

Backing | Finish: Acrylic

A Abrasion Resistance: 70,000 double rubs (wire screen)

Weight: 13.0 ounces per linear yard (402 g/m)

Width: 54" (137-140 cm)

Repeat: 1/4"H x 1/2"V (Pattern is woven up the roll and suitable for railroading)

*** Lightfastness:** 60 Hours, Class 5

☘ Colorfastness: Wet - Class 5 | Dry - Class 5

☆ Seam Slippage: Warp - 62 lbs | Fill - 54 lbs.

Cleaning Instructions: WS - For water based stains, use mild detergent foam or upholstery shampoo. For oil based stains, spot clean with a dry cleaning solvent being sure to test area first.

🔥 Flame Resistance: California Technical Bulletin 117-2013 Section 1: Cover Fabric Test; CS-191-53, Class 1; BIFMA X5.7-1991; UFAC, Class 1; B. S. 5852 Part 1: 1979 Ignition Source 0, smoldering cigarette.

Fabrics by Absecon Mills, Inc. Fabric performance symbols indicate that a fabric performs to commercial furniture manufacturing standards and passes all applicable testing as specified by the Association for Contract Textiles (ACT).

03/2014 | For additional cards or memo samples:

email samples@absecon.com or call 1-877-356-4557



Absecon Mills is focused on being a responsible corporate entity and we are continually striving to find ways to help preserve our environment, increase energy efficiency and reduce waste. Our mode of manufacturing is specifically designed to prevent damage to the environment. Our products are woven using wind power and many are constructed with polypropylene (a by-product of gasoline manufacturing, utilizing post-industrial waste) and recycled polyester, which helps keep post-consumer waste in the material stream and out of landfills. Absecon offers finishes that use ten times less fluorocarbons than conventional finishes and are SCS Indoor Advantage Gold certified. We participate in a fabric recycling program and work hard to lessen our footprint on the environment. For more information on our green initiatives, please visit www.absecon.com



WOVEN WITH WIND POWER

Colors may vary slightly from dye lot to dye lot.

*ASTM-D-4034: Seam 12mm from edge using 7 stitches per 25mm (1"), plain lock stitch and a 22 ballpoint needle)

