

A & D Style

Fabric Collections From Absecon Mills & Douglass Industries

 **GreenShield™** *The first and only textile finish inspired by nature.*



## *Retrospective Collection* >>

BACKGAMMON  
BRANCHPORT  
BURBANK  
FIDGET  
FLOWER POWER  
ORSAY  
TWINKLE



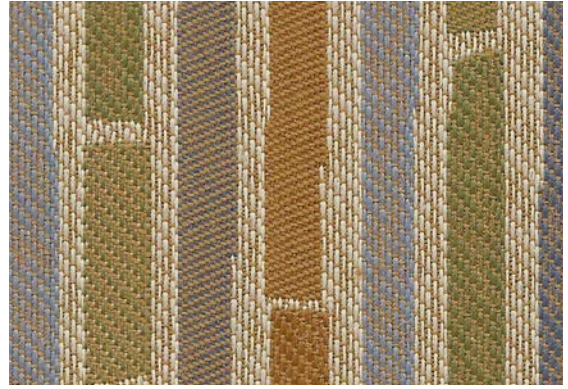
TWINKLE  
*Alabaster*



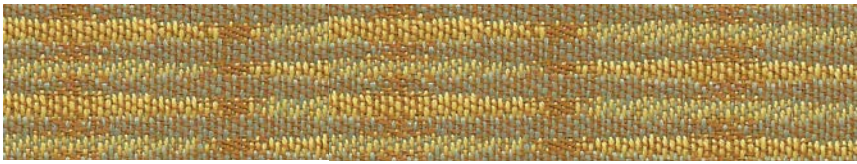
FIDGET  
*Beach Sand*



TWINKLE  
*Branch*



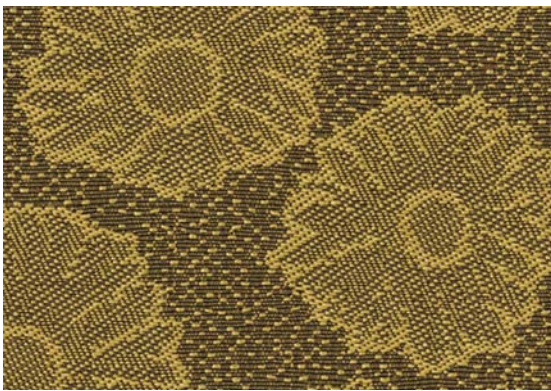
BURBANK  
*Hampton*



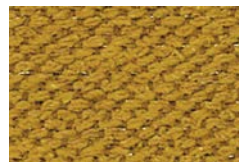
BACKGAMMON  
*Desert Tan*



FIDGET  
*Moon Shadow*



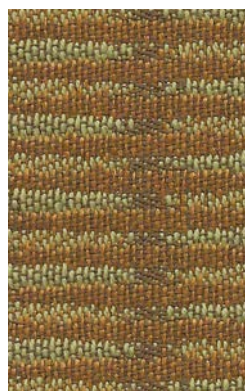
FLOWER POWER  
*Husk*



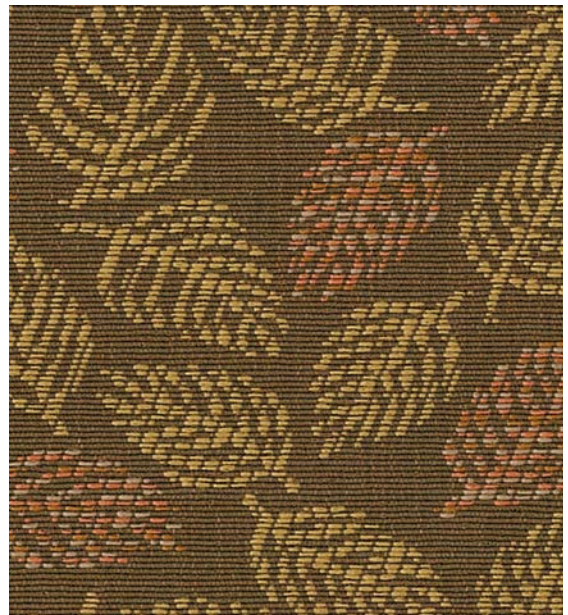
TWINKLE  
*Caramel*



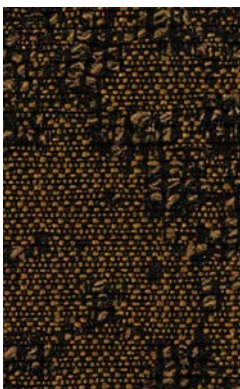
FIDGET  
*Bark*



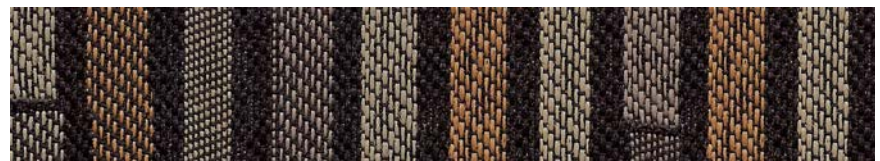
BACKGAMMON  
*Truffle*



BRANCHPORT  
*Toffee*



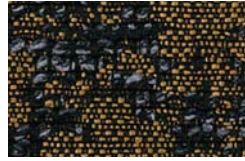
ORSAY  
*Dark Walnut*



BURBANK  
*Woodwork*



BACKGAMMON  
*Nautica*



ORSAY  
*Atlantis*



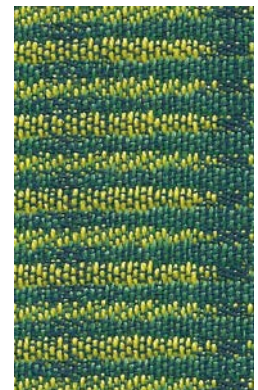
TWINKLE  
*Blue Moon*



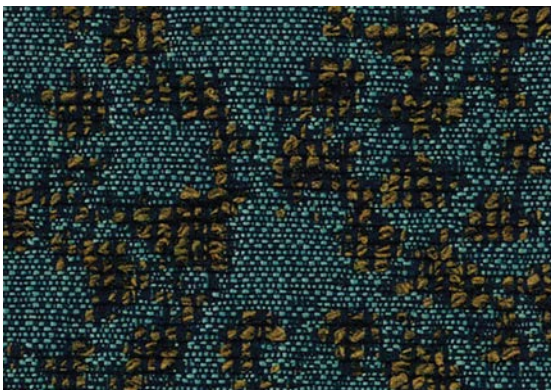
BRANCHPORT  
*Indigo*



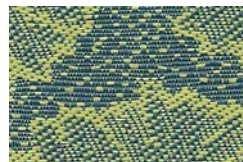
BURBANK  
*Seaport*



BACKGAMMON  
*Oceana*



ORSAY  
*Blue Hawaii*



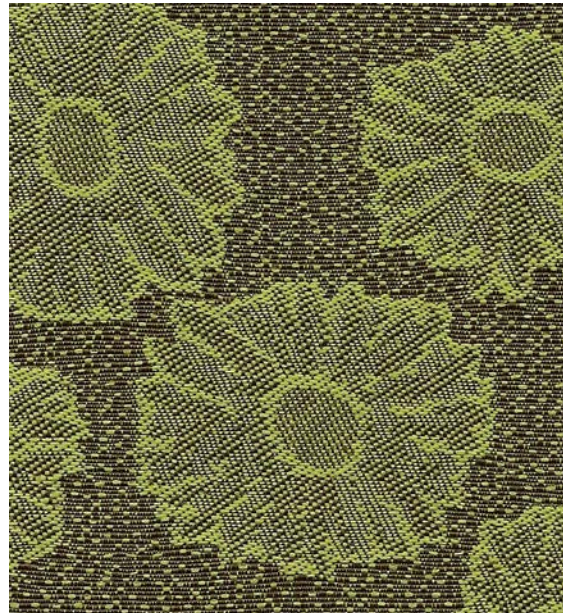
FLOWER POWER  
*Spa*



TWINKLE  
*Lima*



FIDGET  
*Everglade*



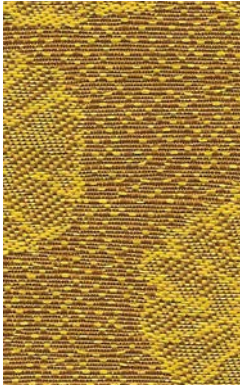
FLOWER POWER  
*Pea Pod*



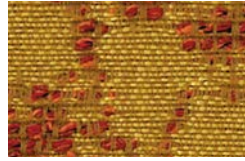
ORSAY  
*Moss*



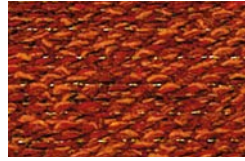
BACKGAMMON  
*Spring Green*



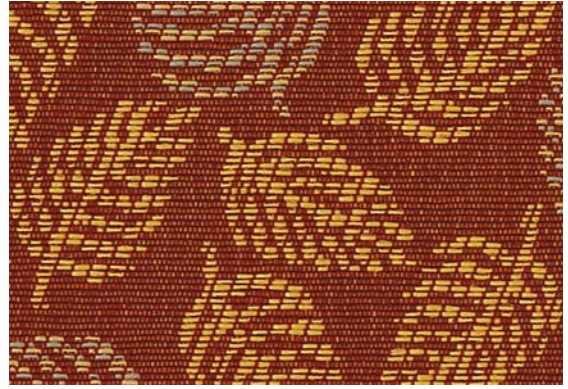
FLOWER POWER  
*Gold*



ORSAY  
*Mango*



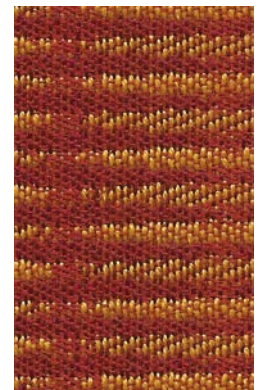
TWINKLE  
*Punch*



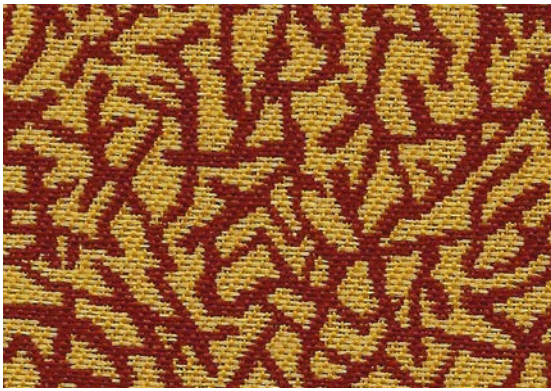
BRANCHPORT  
*Brick Red*



BURBANK  
*Autumn*



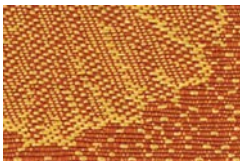
BACKGAMMON  
*Cranberry*



FIDGET  
*Marmalade*



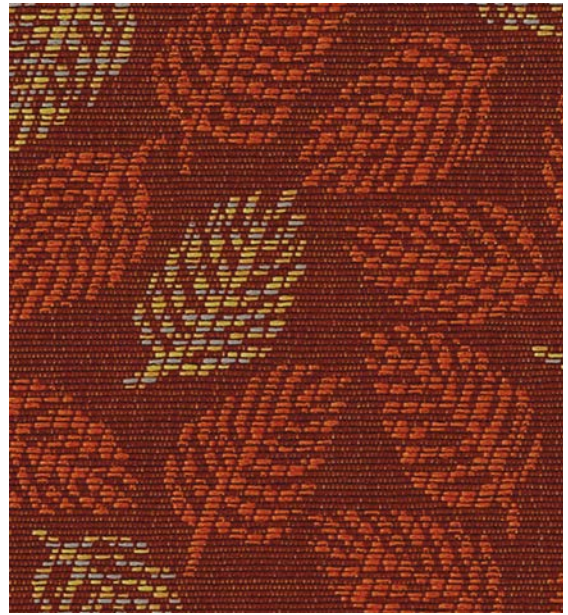
ORSAY  
*Scarlet*



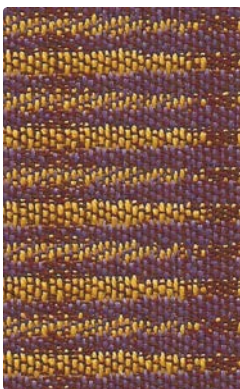
FLOWER POWER  
*Peachy*



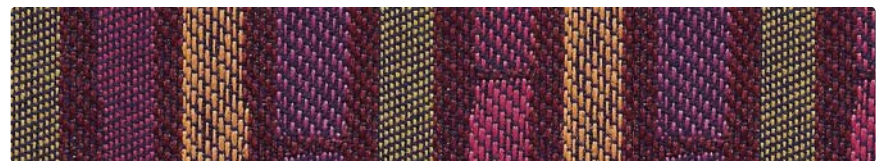
ORSAY  
*Fuschia*



BRANCHPORT  
*Tabasco*



BACKGAMMON  
*Grapevine*



BURBANK  
*Juicy Fruit*

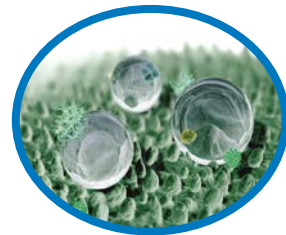


**Green Nanotechnology achieves more by using less and makes every atom count!**

*GreenShield™ is the only high performance fabric finish that responsibly manages environmentally harmful chemicals.*

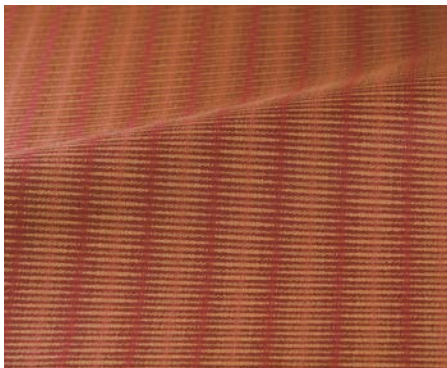
- Patented product uniquely based on inorganic nanoparticle architecture
- Certified for minimizing harmful fluorochemicals while delivering superior water and stain repellency
- Eliminates volatile organic chemicals and solvents
- Certified for Indoor Air Quality
- Anti-odor (microbe and bacteria resistant) without leaching harmful chemistries
- Free of any brominated flame retardants
- Lower overall chemical laydown for improved hand and enhanced recyclability

Through patented nanotechnology, G3i achieves more while using less. Through careful selection of materials and mode of manufacturing, Absecon Mills does the same. This makes GreenShield and Absecon a perfect pairing. Together, we can make almost any fabric a high performance fabric in a manner that has reduced impact on the environment and on human health. And what could be more environmentally significant than the health and safety of ourselves and our planet? GreenShield FR adds the key property of flame retardance to the finish, allowing fabrics to pass certified flammability tests, while retaining all of GreenShield's benefits. Reducing the use of harmful chemicals, while maintaining high performance resistance to water and stains and anti-odor (microbe and bacteria resistance) is one of GreenShield's significant advantages over other finishes.



Through the principle of micro-roughness, GreenShield reduces the use of fluorochemicals on fabrics. Undetectable to human touch, micro-roughness works at the molecular level and induces water and oil to ride on a pocket of air.

Please note that these are digital representations of the patterns so color may vary from the actual swatches. Patterns not shown to scale.



BACKGAMMON



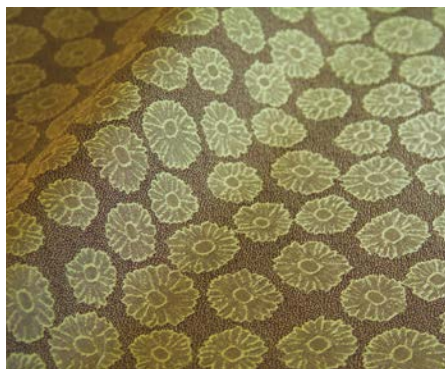
BRANCHPORT



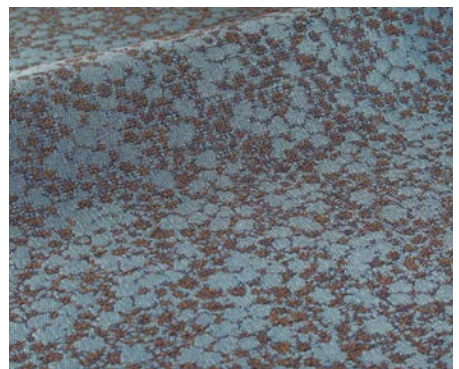
BURBANK



FIDGET



FLOWER POWER



ORSAY

# Retrospective COLLECTION

5\* These patterns are covered by a 5 year limited performance warranty. Contact your sales representative for written warranty terms and conditions.

TECHNICAL INFORMATION								
Pattern & Direction Usable Width: 54"	Fiber	Repeat	Backing   Finish	Weight (per yard)	Cleaning Code	Abrasion ASTM 4157 (Double Rubs)	Lightfastness AATCC 16E	Seam Slippage* ASTM-D-3597
<b>Backgammon®</b> (Railroaded)	100% Polyester	3-3/8" H 3/8" V	Acrylic with GreenShield®	13.5 oz.	W	100,000 (Cotton Duck)	40 Hours Class 4.5	Warp - 99 lbs Fill - 99 lbs
<b>Branchport®</b> (Up the roll)	100% Polyester	4-3/4" H 4-5/8" V	Acrylic with GreenShield®	11.5 oz.	W	75,000 (Cotton Duck)	40 Hours Class 4.5	Warp - 99 lbs Fill - 74 lbs
<b>Burbank®</b> (Railroaded)	100% Polyester	14-1/8" H 7-13/16" V	Acrylic with GreenShield®	11.8 oz.	W	100,000 (Cotton Duck)	40 Hours Class 4-5	Warp - 99 lbs Fill - 52 lbs
<b>Fidget®</b> (Up the roll)	100% Polyester	13-5/8" H 11-1/2" V	Acrylic with GreenShield®	11.2 oz.	W	50,000 (Cotton Duck)	40 Hours Class 4.5	Warp - 60 lbs Fill - 73 lbs
<b>Flower Power®</b> (Up the roll)	100% Polyester	9-1/2" H 9-1/8" V	Acrylic with GreenShield®	9.4 oz.	W	100,000 (Cotton Duck)	40 Hours Class 4.5	Warp - 99 lbs Fill - 79 lbs
<b>Orsay®</b> (Up the roll)	62% Polyester 28% Cotton 10% Acrylic	9-7-16" H 7-1-16" V	Acrylic with GreenShield®	13.5 oz.	WS	65,000 (Cotton Duck)	40 Hours Class 4.5	Warp - 99 lbs Fill - 41 lbs
<b>Twinkle</b> (Up the roll)	46% Polyester 38% Cotton 13% Acrylic 3% Mylar	None	Acrylic with GreenShield®	12.9 oz.	WS	100,000 (Cotton Duck)	40 Hours Class 4.5	Warp - 99 lbs Fill - 99 lbs

**Cleaning Instructions:** WS - For water based stains, use mild detergent foam or upholstery shampoo. For oil based stains, spot clean with a dry cleaning solvent, being sure to test area first. CLEANING BY A PEOFESSIONLA SERVICE IS RECOMMENDED.

W - Use a water based cleaner. Spot clean fabric with water based cleaning agents such as a mild detergent foam or commercial upholstery shampoo. Use sparingly and avoid overwetting. CLEANING BY A PEOFESSIONLA SERVICE IS RECOMMENDED.

**Flame Resistance:** California Technical Bulletin 117-2013: Cover Fabric Test; CS-191-53, Class 1; BIFMA X5.7-1991; UFAC, Class 1; B. S. 5852 Part 1: 1979 Ignition Source 0, smoldering cigarette.

**Fabrics by Absecon Mills, Inc.** Fabric performance symbols indicate that a fabric performs to commercial furniture manufacturing standards and passes all applicable testing as specified by the Association for Contract Textiles (ACT).

11/2011 | For additional cards or memo samples:

email [samples@absecon.com](mailto:samples@absecon.com) or call 1-877-356-4557



Absecon Mills is focused on being a responsible corporate entity and we are continually striving to find ways to help preserve our environment, increase energy efficiency and reduce waste. Our mode of manufacturing is specifically designed to prevent damage to the environment. Our products are woven using wind power and many are constructed with polypropylene (a by-product of gasoline manufacturing, utilizing post-industrial waste) and recycled polyester, which helps keep post-consumer waste in the material stream and out of landfills. Absecon offers finishes that use ten times less fluorocarbons than conventional finishes and are SCS Indoor Advantage Gold certified. We participate in a fabric recycling program and work hard to lessen our footprint on the environment. For more information on our green initiatives, please visit [www.absecon.com](http://www.absecon.com).



Colors may vary slightly from dye lot to dye lot.

\*ASTM-D-3597-02: Seam 12mm from edge using 7 stitches per 25mm (1"), plain lock stitch and a 22 ballpoint needle)

