



Sherpa - Canvas



Sherpa - Grey Mix



Shire - Heath



Shire - Ascot



Sherpa - Brown Haze



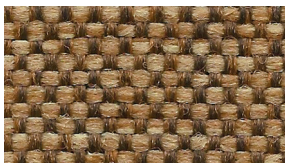
Shire - Greystone



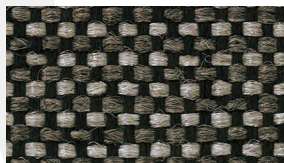
Sherpa - Jade



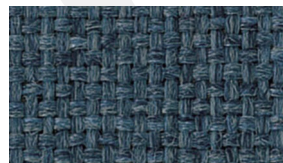
Sherpa - Scarlet



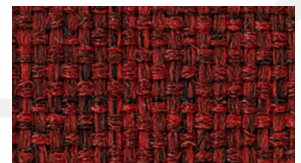
Shire - Blair Brown



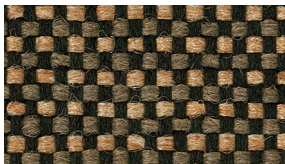
Shire - Black Marble



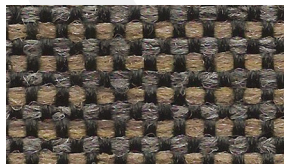
Sherpa - Academy



Sherpa - Garnet



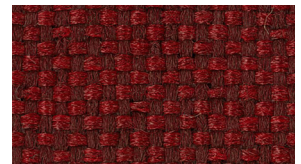
Shire - Hopsack



Shire - Stonewall



Shire - Commodore



Shire - Red Rose



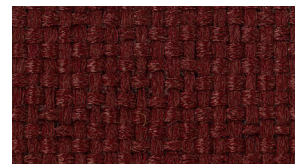
Sherpa - Gargoyle



Shire - Fossil



Sherpa - Royal



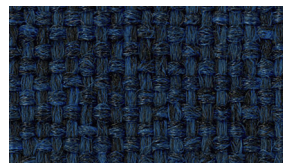
Sherpa - Maroon



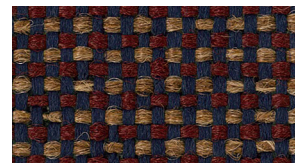
Sherpa - Coffee



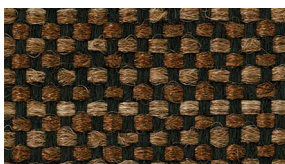
Sherpa - Grey Heather



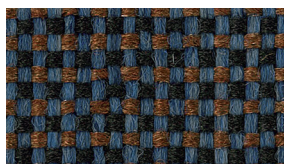
Sherpa - Dark Blue



Shire - Country



Shire - Espresso



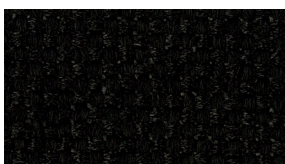
Shire - Titan Blue



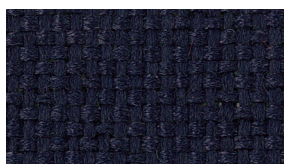
Sherpa - Indigo



Shire - Delft Blue



Sherpa - Black



Sherpa - Navy

Sherpa & Shire

Ultra Lana®

LL* Pattern is covered by a limited lifetime limited performance warranty. Contact your sales representative for written warranty terms and conditions.

TECHNICAL INFORMATION

Fiber: 100% Ultra Lana™ Inherent High UV Marquésa Lana® technology

Backing | Finish: Acrylic

A Abrasion Resistance: 250,000 double rubs (wire screen)

Weight: 16.0 ounces per linear yard (494 g/m)

Width: 54" (137-140 cm)

Repeat: 15/16"H x 1-1/8"V (Pattern is woven up the roll and suitable for railroading)

*** Lightfastness:** 2000 Hours, AATCC 16E, Class 5

☘ Colorfastness: Wet - Class 5 | Dry - Class 5

☆ Seam Slippage: Warp - 91 lbs | Fill - 95 lbs.

Cleaning Instructions: WS - For water based stains, use mild detergent foam or upholstery shampoo. For oil based stains, spot clean with a dry cleaning solvent being sure to test area first.

🔥 Flame Resistance: California Technical Bulletin 117-2013; NFPA 260

Fabrics by Absecon Mills, Inc. Fabric performance symbols indicate that a fabric performs to commercial furniture manufacturing standards and passes all applicable testing as specified by the Association for Contract Textiles (ACT).

This pattern does not contain fire retardant additives.

8/2022 | For additional cards or memo samples:

email samples@absecon.com or call 1-877-356-4557



ACADEMIC



CORPORATE



HEALTHCARE



HOSPITALITY



TRANSPORT



WORSHIP



Absecon Mills is focused on being a responsible corporate entity and we are continually striving to find ways to help preserve our environment, increase energy efficiency and reduce waste. Our mode of manufacturing is specifically designed to prevent damage to the environment. Our products are woven using wind power and many are constructed with polypropylene (a by-product of gasoline manufacturing, utilizing post-industrial waste) and recycled polyester, which helps keep post-consumer waste in the material stream and out of landfills. Absecon offers finishes that use ten times less fluorocarbons than conventional finishes and are SCS Indoor Advantage Gold certified. We participate in a fabric recycling program and work hard to lessen our footprint on the environment. For more information on our green initiatives, please visit www.absecon.com



WOVEN WITH
WIND POWER

Colors may vary slightly from dye lot to dye lot.

*ASTM-D-4034: Seam 12mm from edge using 7 stitches per 25mm (1"), plain lock stitch and a 22 ballpoint needle

Marquésa Lana®

