



*The perfect dress code for your seating.*



## *'Smart Casual' Collection* >>

DIXON  
DONOVAN  
GADGET  
HOPPER  
INCLINE  
SIDESTEP

## SIDESTEP



*Craft Paper*



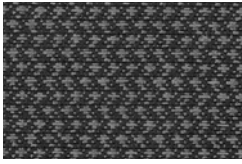
*Heather*



*Banner Blue*



*Navy*



*Smoke*



*Madeira*



*Greenback*



*Black*

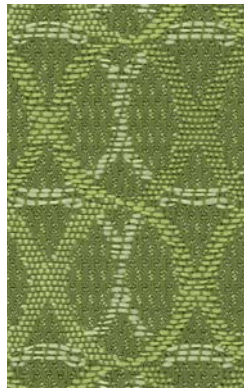
## HOPPER



*Grey*



*Golden*



*Grass*



*Evergreen*



*Putty*



*Café*

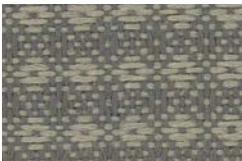


*Garnet*

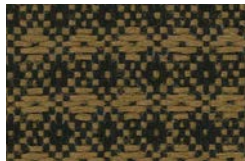


*Midnight*

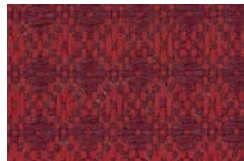
## DONOVAN



*Oyster*



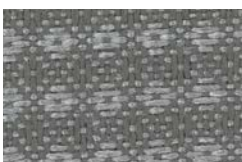
*Chestnut*



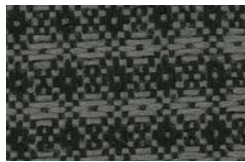
*Cherry*



*Cadet Blue*



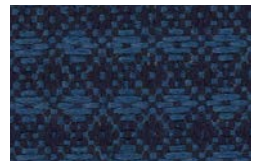
*Silver*



*Charcoal*



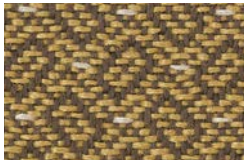
*Leaf*



*Dark Blue*



## GADGET



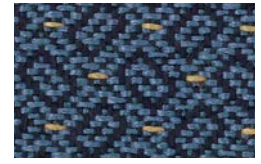
*Gold*



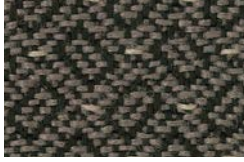
*Green*



*Red*



*Blue*



*Grey*



*Brown*



*Burgundy*



*Navy*

## INCLINE



*Beige*



*Bronze*



*Garnet*



*Blue*



*Silver*



*Kiwi*



*Rusty*

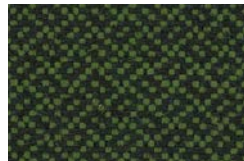


*Cavern*

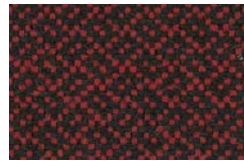
## DIXON



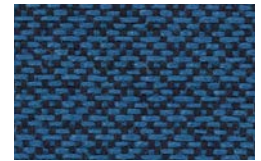
*Oak*



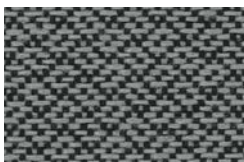
*Forest*



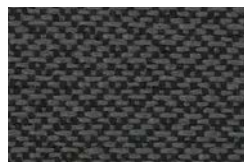
*Burgundy*



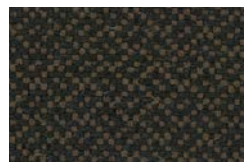
*Bright Blue*



*Grey*



*Ebony*



*Mulch*



*Navy*

# Smart Casual COLLECTION

5\* Patterns are covered by a 5 year limited performance warranty. Contact your sales representative for written warranty terms and conditions.

## TECHNICAL INFORMATION

Pattern/Direction Width: 54"	Fiber	Repeat	Backing   Finish <small>(Please inquire about other available finishes to suit your specific needs)</small>	Weight (per yard)	Cleaning Code	Abrasion ASTM 4157 (Double Rubs)	Lightfastness AATCC 16E	Seam Slippage* ASTM-D-4034
Dixon (Up the roll)	50% Polyester 50% ML® Polyolefin	1/4" H 3/16" V	Acrylic with Defend®	14.7 oz.	WS	145,000 (Wire Screen)	60 hours Class 5	Warp - 75 lbs Fill - 79 lbs
Donovan (Up the roll)	100% Marquésa Lana® Polyolefin	1/4" H 5/16" V	Acrylic	12.7 oz.	WS	50,000 (Wire Screen)	60 hours Class 5	Warp - 73 lbs Fill - 72 lbs
Gadget (Up the roll)	100% Marquésa Lana® Polyolefin	1/2" H 1/2" V	Acrylic	11.2 oz.	WS	50,000 (Wire Screen)	60 Hours Class 5	Warp - 96 lbs Fill - 99 lbs
Hopper® (Up the roll)	100% Polyester	1-1/2" H 1-3/4" V	Acrylic with Defend®	12.7 oz.	WS	50,000 (Cotton Duck)	60 Hours Class 5	Warp - 60 lbs Fill - 64 lbs
Incline® (Up the roll)	100% Polyester	2-3/4" H 1-3/4" V	Acrylic with Defend®	11.3 oz.	WS	50,000 (Cotton Duck)	60 Hours Class 5	Warp - 62 lbs Fill - 74 lbs
Sidestep (Up the roll)	100% Polyester	None	Acrylic with Defend®	12.7 oz.	WS	100,000 (Cotton Duck)	60 Hours Class 5	Warp - 92 lbs Fill - 91 lbs

Cleaning Instructions: WS - For water based stains, use mild detergent foam or upholstery shampoo. For oil based stains, spot clean with a dry cleaning solvent being sure to test area first.

Flame Resistance: California Technical Bulletin 117-2013; NFPA 260

Fabrics by Absecon Mills, Inc. Fabric performance symbols indicate that a fabric performs to commercial furniture manufacturing standards and passes all applicable testing as specified by the Association for Contract Textiles (ACT).

02/2019 | For additional cards or memo samples:

email [samples@absecon.com](mailto:samples@absecon.com) or call 1-877-356-4557



Absecon Mills is focused on being a responsible corporate entity and we are continually striving to find ways to help preserve our environment, increase energy efficiency and reduce waste. Our mode of manufacturing is specifically designed to prevent damage to the environment. Our products are woven using wind power and many are constructed with polypropylene (a by-product of gasoline manufacturing, utilizing post-industrial waste) and recycled polyester, which helps keep post-consumer waste in the material stream and out of landfills. Absecon offers finishes that use ten times less fluorocarbons than conventional finishes and are SCS Indoor Advantage Gold certified. We participate in a fabric recycling program and work hard to lessen our footprint on the environment. For more information on our green initiatives, please visit [www.absecon.com](http://www.absecon.com)



WOVEN WITH  
WIND POWER

Colors may vary slightly from dye lot to dye lot.

\*ASTM-D-4034: Seam 12mm from edge using 7 stitches per 25mm (1"), plain lock stitch and a 22 ballpoint needle)



High Performance Water and  
Stain Repellant

