



Keeping textiles dry and clean.



Suite Life Collection >>

- ELATION
- LIAISON
- MOJO
- RAZZLE
- VERSA



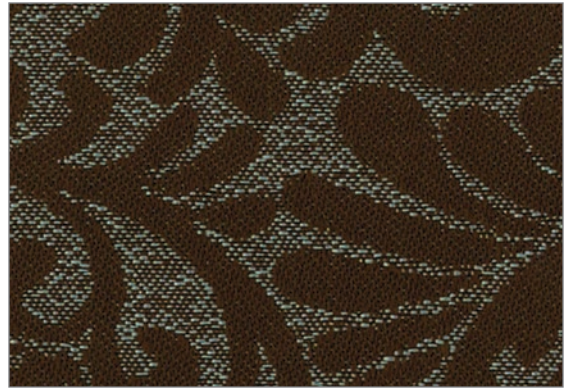
LIAISON
Linen



VERSA
Sand Dollar



VERSA
Oyster



LIAISON
Northampton



RAZZLE
Smokerise



VERSA
Light Cocoa



MOJO
Driftscape



ELATION
Silverado



VERSA
Rattan



LIAISON
Onyx



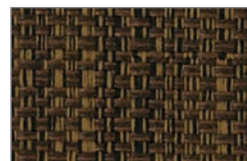
MOJO
Hearthstone



LIAISON
Black Gold



ELATION
Black Beauty



VERSA
Bison



RAZZLE
Stallion



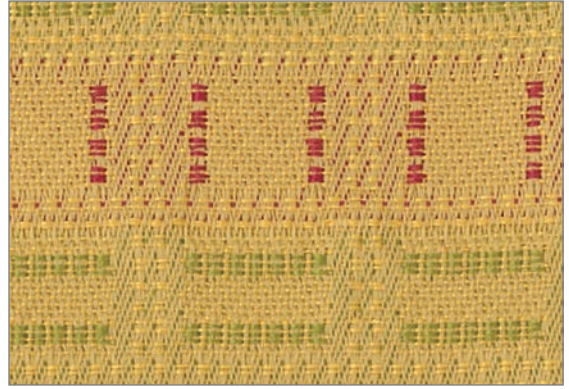
ELATION
Buttercup



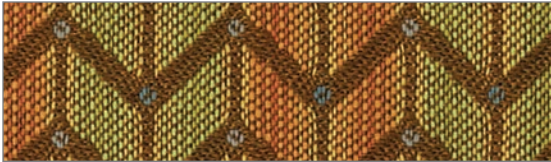
LIAISON
Golden Age



VERSA
Pistachio



MOJO
Pink Lemonade



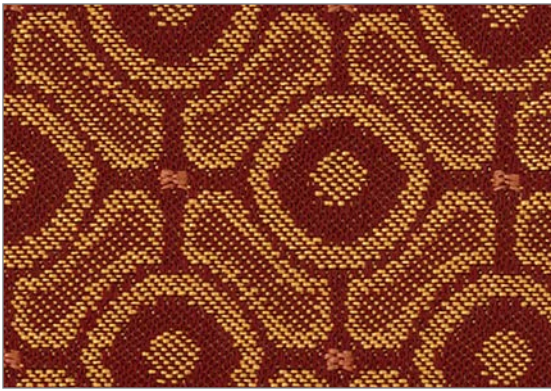
RAZZLE
Chalice



VERSA
Pumpkin



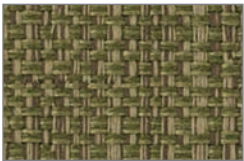
LIAISON
Heirloom



ELATION
Coral Gable



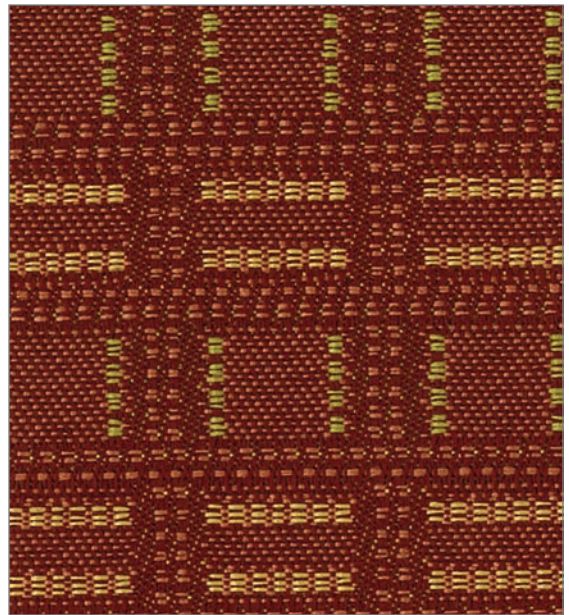
VERSA
Tomato



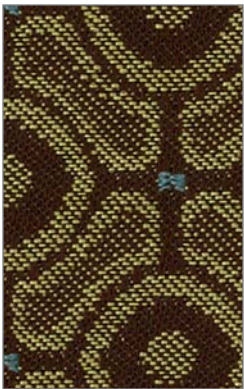
VERSA
Marshland



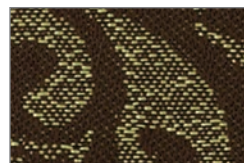
RAZZLE
Harvest Moon



MOJO
Miami Spice



ELATION
Avocado



LIAISON
Palm Tree



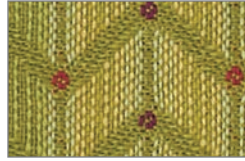
RAZZLE
Ranchero



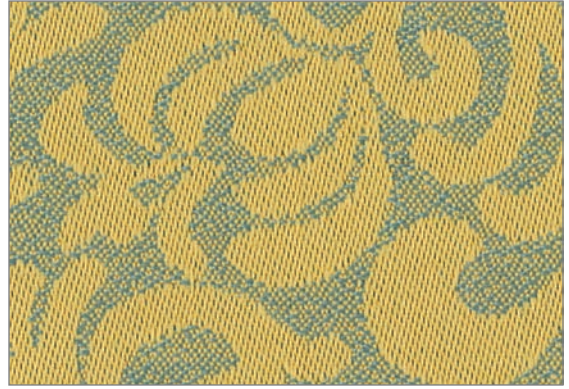
ELATION
Margarita



VERSA
Fresca



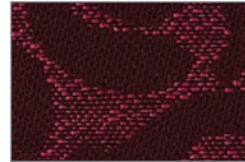
RAZZLE
Parakeet



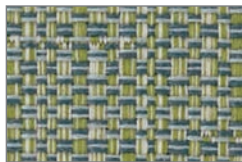
LIAISON
Nassau



VERSA
Valentine



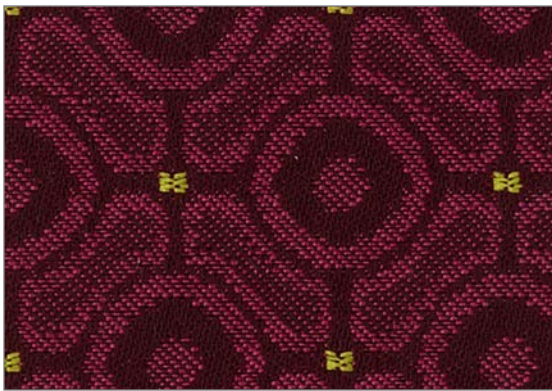
LIAISON
Azalea



VERSA
Ocean Spray



RAZZLE
Key Largo



ELATION
Candy Crush



VERSA
Mosaic Blue



LIAISON
Yacht Club



MOJO
Newburyport



ELATION
Basic Blue



ELATION
Marina



RAZZLE
Seaport



LIAISON
Regal Blue

Suite Life COLLECTION

Featuring Nanosphere®... naturally self-cleaning

NanoSphere®, the nanotech-based finishing technology allows dirt and water to simply run off the surface of the textiles. This mimics the natural self-cleaning effect of certain plants whose leaves always remain clean, because dirt simply cannot adhere to the finely structured surface, and is easily washed off when it rains.

The natural non-stick and cleaning process, also known as the self-cleaning effect, is transferred to the surface of textiles by means of nano technology. Compared to traditional textile impregnation processes, NanoSphere achieves significantly better results with regards to:

- Water and dirt repelling properties
- Oil repelling properties
- Washing permanence
- High level of abrasion resistance

The protective function of NanoSphere is still retained after frequent use and numerous washing cycles and has no effect on comfort, look, feel and breathability.

Learning from nature... keeps fabrics dry & clean

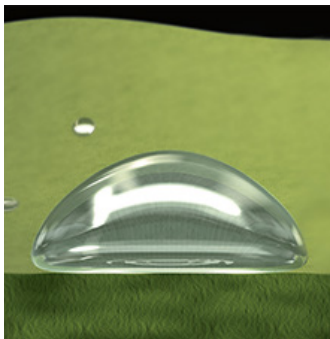
NATURE SHOWS US HOW

The leaves of certain plants always stay clean because dirt cannot adhere to their finely-structured surfaces and is easily washed off by the rain. This natural non-stick and cleaning process, also known as the self-cleaning effect, is permanently transferred to the fabric surface by means of nanotechnology.

LIQUIDS AND STAINS DON'T HAVE A CHANCE

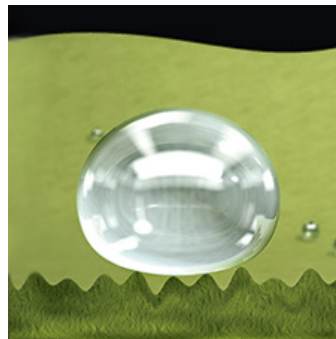
The nanoparticles in the NanoSphere finish form a fine structure on the textile surface. Liquids and other substances such as oil or ketchup run off the NanoSphere surface, and any residue can easily be rinsed off with a little water.

COMPARISON OF A CONVENTION FABRIC SURFACE WITH A NANOSPHERE SURFACE



The Classic surface:

The contact surface of a water drop or a particle of dirt with the fabric, and therefore the level of adhesion is very large. As a result, water or dirt adheres to the fabric.



The NanoSphere surface:

Water drops or particles of dirt lie only on the peaks of the nano particles, and therefore have a lower contact area. Adhesion is significantly reduced, water runs off, dirt is repelled or can simply be rinsed off.

TECHNICAL INFORMATION						A	☀	★
Pattern & Direction Usable Width: 54"	Fiber	Repeat	Backing Finish	Weight (per yard)	Cleaning Code	Abrasion ASTM 4157 (Double Rubs)	Lightfastness AATCC 16E	Seam Slippage ASTM-D-4034
Elation® (Up the roll)	100% Polyester	1-3/4" H 1-7/8" V	Acrylic with Nanosphere®	11.3 oz.	WS	50,000 (Cotton Duck)	40 Hours Class 4.5	Warp - 85 lbs Fill - 99 lbs
Liaison® (Up the roll)	100% Polyester	7" H 6-7/16" V	Acrylic with Nanosphere®	11.5 oz.	WS	60,000 (Cotton Duck)	40 Hours Class 4.5	Warp - 80 lbs Fill - 99 lbs
Mojo® (Up the roll)	100% Polyester	1-3/16" H 1-11/16" V	Acrylic with Nanosphere®	12.4 oz.	WS	75,000 (Cotton Duck)	40 Hours Class 4-5	Warp - 80 lbs Fill - 99 lbs
Razzle® (Railroaed)	100% Polyester	7/8" H 5/8" V	Acrylic with Nanosphere®	15.0 oz.	WS	100,000 (Cotton Duck)	40 Hours Class 4.5	Warp - 95 lbs Fill - 100 lbs
Versa® (Up the roll)	100% Polyester	None	Acrylic with Nanosphere®	16.4 oz.	WS	50,000 (Cotton Duck)	40 Hours Class 4.5	Warp - 62 lbs Fill - 99 lbs

Cleaning Instructions: WS - For water based stains, use mild detergent foam or upholstery shampoo. For oil based stains, spot clean with a dry cleaning solvent, being sure to test area first.

Flame Resistance: California Technical Bulletin 117-2013 Section 1: Cover Fabric Test; BIFMA X5.7-1991; UFAC, Class 1; B. S. 5852 Part 1: 1979 Ignition Source 0, smoldering cigarette. 

Fabrics by Absecon Mills, Inc. Fabric performance symbols indicate that a fabric performs to commercial furniture manufacturing standards and passes all applicable testing as specified by the Association for Contract Textiles (ACT).

02/2015 | For additional cards or memo samples:

email samples@absecon.com or call 1-877-356-4557



Absecon Mills is focused on being a responsible corporate entity and we are continually striving to find ways to help preserve our environment, increase energy efficiency and reduce waste. Our mode of manufacturing is specifically designed to prevent damage to the environment. Our products are woven using wind power and many are constructed with polypropylene (a by-product of gasoline manufacturing, utilizing post-industrial waste) and recycled polyester, which helps keep post-consumer waste in the material stream and out of landfills. Absecon offers finishes that use ten times less fluorocarbons than conventional finishes and are SCS Indoor Advantage Gold certified. We participate in a fabric recycling program and work hard to lessen our footprint on the environment. For more information on our green initiatives, please visit www.absecon.com.



WOVEN WITH
WIND POWER

Colors may vary slightly from dye lot to dye lot.

*ASTM-D-4034: Seam 12mm from edge using 7 stitches per 25mm (1"), plain lock stitch and a 22 ballpoint needle)

